

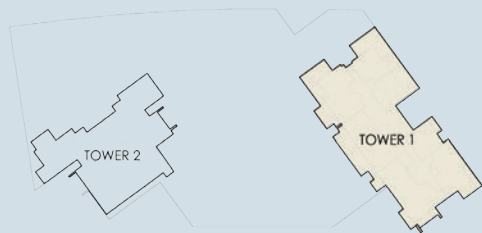
BLVD CRESCENT

3 Bedroom

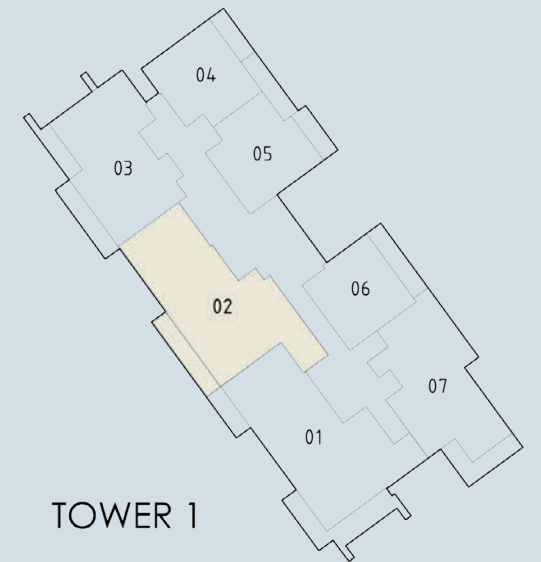
Unit 02

Level 02 - 12

Tower 1



SITE PLAN



TOWER 1



SUITE AREA:	165.87 SQ.M (1785.41 SQ.FT)
BALCONY AREA:	15.97 SQ.M (171.90 SQ.FT)
<hr/>	
TOTAL AREA:	181.84 SQ.M (1957.31 SQ.FT)

Disclaimer: 1. All room dimensions are measured to structural elements and exclude wall finishes and construction tolerances. 2. All dimensions have been provided by our consultant architects. 3. All materials, dimensions & drawings are approximate. Information is subject to change without notice. 4. Actual suite area may vary from the stated area. Drawings not to scale. The developer reserves the right to make revisions. 5. Calculation of suite area is measured as the area bounded by the centre line of demising or partition walls separating one unit from another unit, the exterior face of all exterior walls, and the exterior face of the corridor wall enclosing the adjoining unit. 6. Calculation of balcony area is measured as the area bounded by the centre line of demising or partition walls separating one unit from another unit, the outmost face of the enclosing guard and the external face of the unit adjoining the balcony. 7. The units are measured at typical floor in the building. Columns may vary in size depending on the floor level.

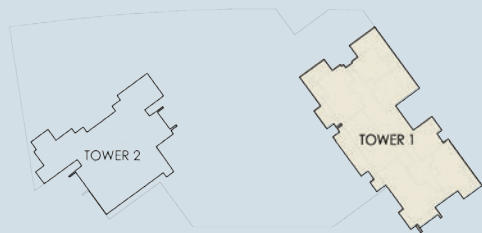
BLVD CRESCENT

2 Bedroom

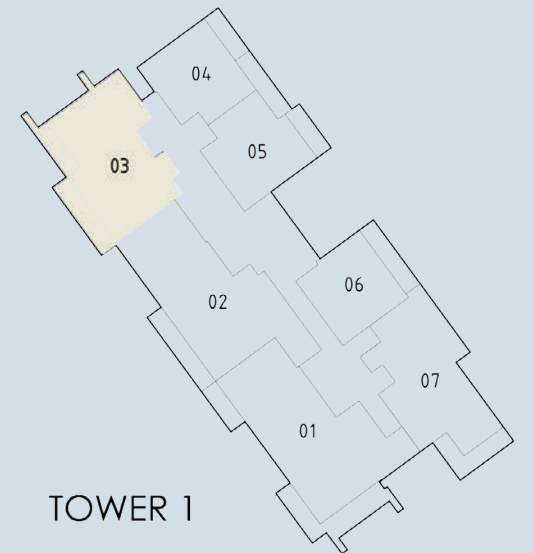
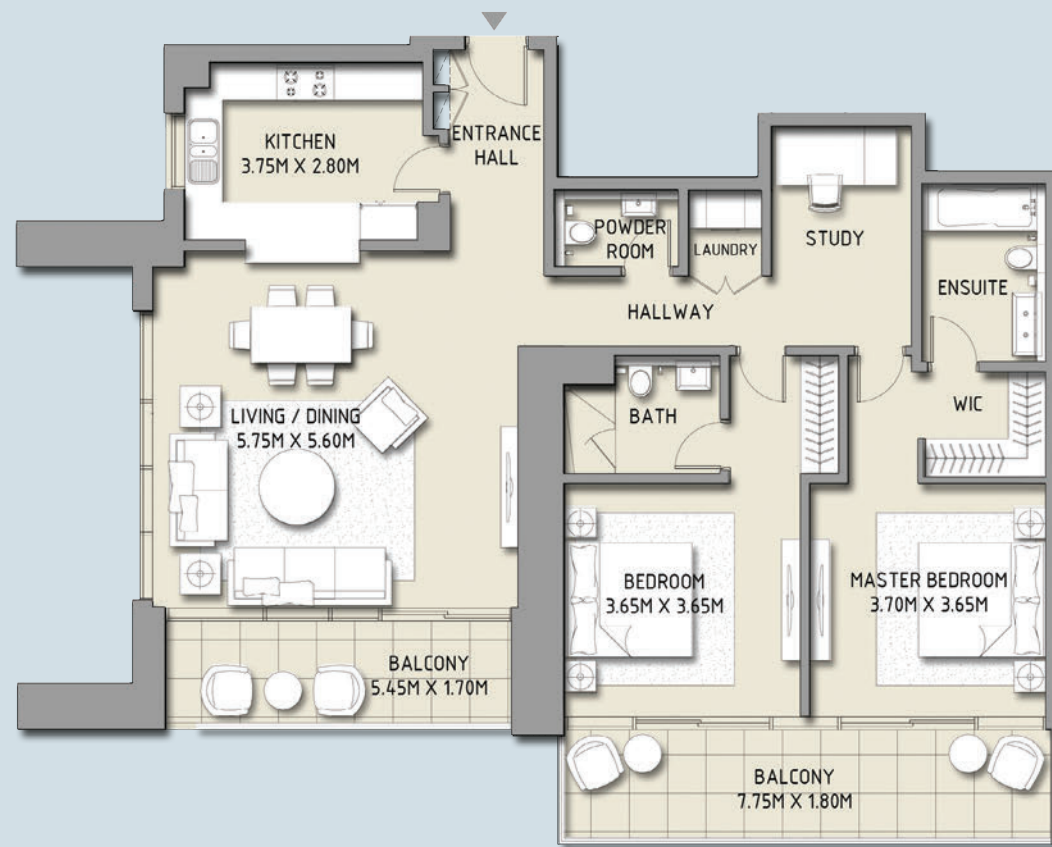
Unit 03

Level 02 - 12

Tower 1



SITE PLAN



TOWER 1



SUITE AREA:	126.98 SQ.M (1366.80 SQ.FT)
BALCONY AREA:	23.93 SQ.M (257.58 SQ.FT)
<hr/>	
TOTAL AREA:	150.91 SQ.M (1624.38 SQ.FT)

Disclaimer: 1. All room dimensions are measured to structural elements and exclude wall finishes and construction tolerances. 2. All dimensions have been provided by our consultant architects. 3. All materials, dimensions & drawings are approximate. Information is subject to change without notice. 4. Actual suite area may vary from the stated area. Drawings not to scale. The developer reserves the right to make revisions. 5. Calculation of suite area is measured as the area bounded by the centre line of demising or partition walls separating one unit from another unit, the exterior face of all exterior walls, and the exterior face of the corridor wall enclosing the adjoining unit. 6. Calculation of balcony area is measured as the area bounded by the centre line of demising or partition walls separating one unit from another unit, the outmost face of the enclosing guard and the external face of the unit adjoining the balcony. 7. The units are measured at typical floor in the building. Columns may vary in size depending on the floor level.

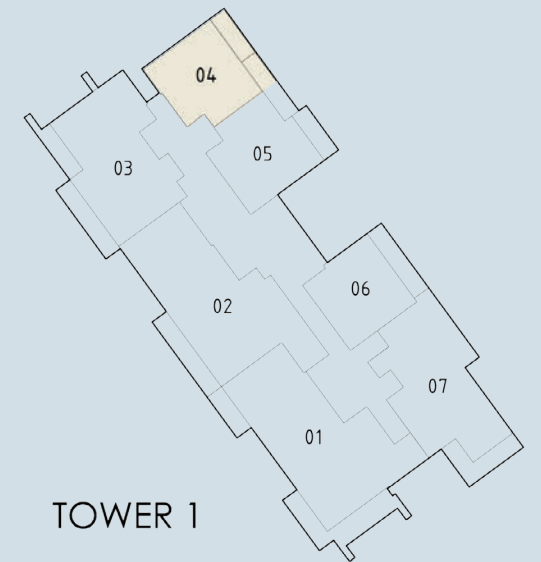
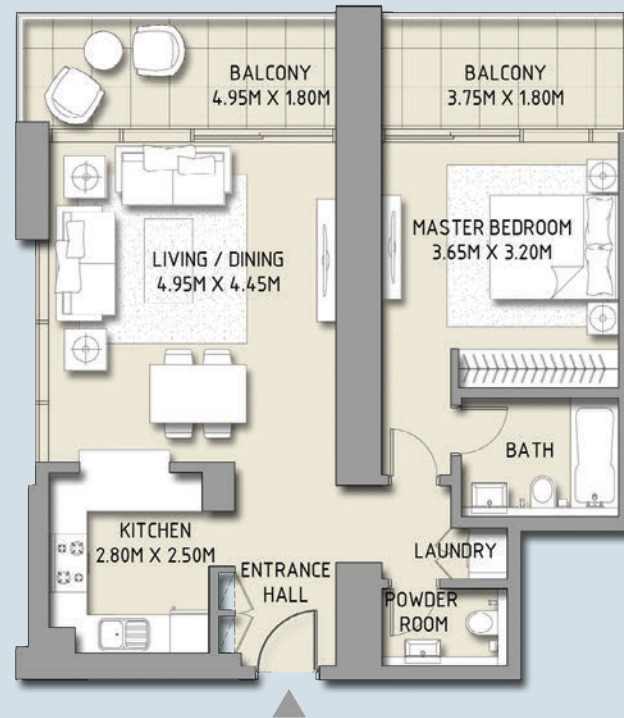
BLVD CRESCENT

1 Bedroom

Unit 04

Level 02 - 12

Tower 1



SUITE AREA:	71.61 SQ.M	(770.80 SQ.FT)
BALCONY AREA:	16.36 SQ.M	(176.10 SQ.FT)
TOTAL AREA:	87.97 SQ.M	(946.90 SQ.FT)

Disclaimer: 1. All room dimensions are measured to structural elements and exclude wall finishes and construction tolerances. 2. All dimensions have been provided by our consultant architects. 3. All materials, dimensions & drawings are approximate. Information is subject to change without notice. 4. Actual suite area may vary from the stated area. Drawings not to scale. The developer reserves the right to make revisions. 5. Calculation of suite area is measured as the area bounded by the centre line of demising or partition walls separating one unit from another unit, the exterior face of all exterior walls, and the exterior face of the corridor wall enclosing the adjoining unit. 6. Calculation of balcony area is measured as the area bounded by the centre line of demising or partition walls separating one unit from another unit, the outmost face of the enclosing guard and the external face of the unit adjoining the balcony. 7. The units are measured at typical floor in the building. Columns may vary in size depending on the floor level.

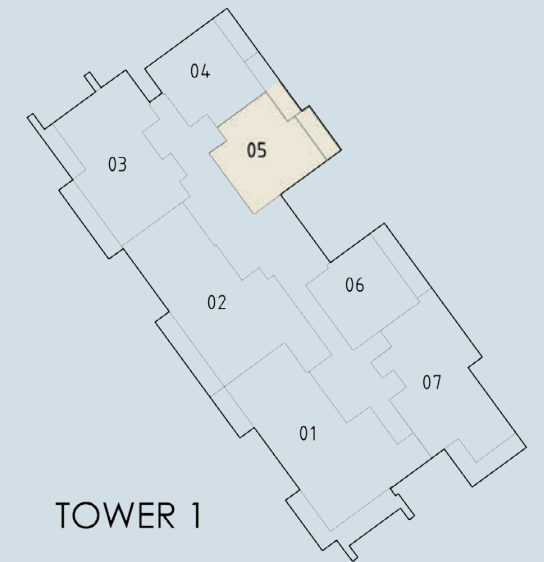
BLVD CRESCENT

1 Bedroom

Unit 05

Level 02 - 12

Tower 1



SUITE AREA:	76.76 SQ.M (826.24 SQ.FT)
BALCONY AREA:	16.27 SQ.M (175.13 SQ.FT)
TOTAL AREA:	93.03 SQ.M (1001.37 SQ.FT)

Disclaimer: 1. All room dimensions are measured to structural elements and exclude wall finishes and construction tolerances. 2. All dimensions have been provided by our consultant architects. 3. All materials, dimensions & drawings are approximate. Information is subject to change without notice. 4. Actual suite area may vary from the stated area. Drawings not to scale. The developer reserves the right to make revisions. 5. Calculation of suite area is measured as the area bounded by the centre line of demising or partition walls separating one unit from another unit, the exterior face of all exterior walls, and the exterior face of the corridor wall enclosing the adjoining unit. 6. Calculation of balcony area is measured as the area bounded by the centre line of demising or partition walls separating one unit from another unit, the outmost face of the enclosing guard and the external face of the unit adjoining the balcony. 7. The units are measured at typical floor in the building. Columns may vary in size depending on the floor level.

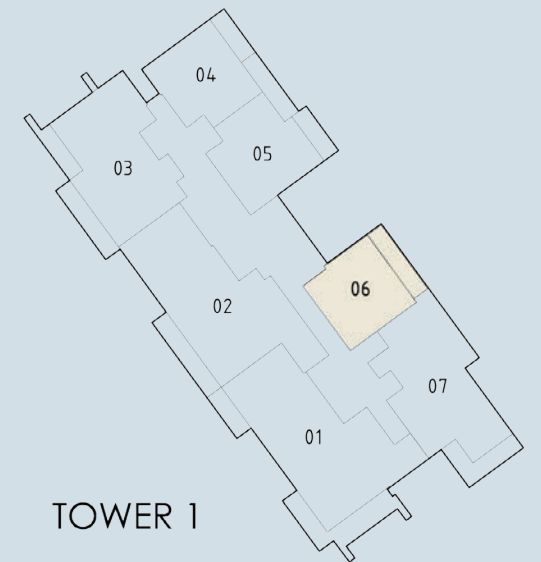
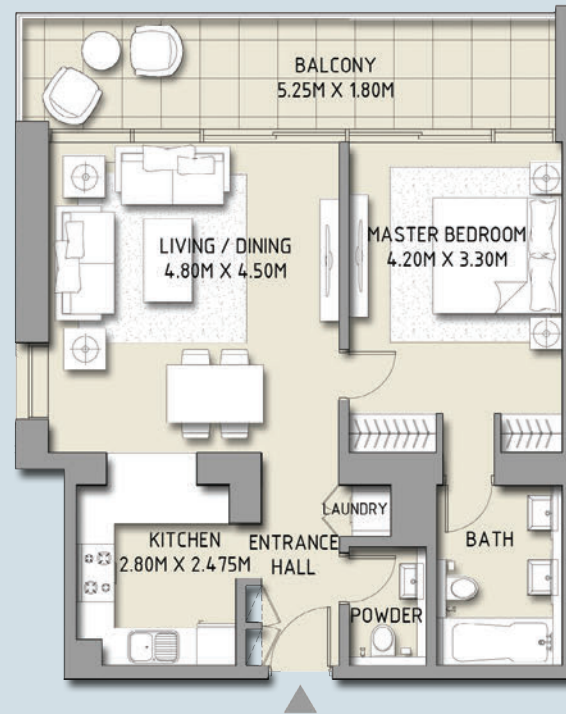
BLVD CRESCENT

1 Bedroom

Unit 06

Level 02 - 12

Tower 1



SUITE AREA:	68.91 SQ.M	(741.74 SQ.FT)
BALCONY AREA:	15.27 SQ.M	(164.36 SQ.FT)
TOTAL AREA:	84.18 SQ.M	(906.11 SQ.FT)

Disclaimer: 1. All room dimensions are measured to structural elements and exclude wall finishes and construction tolerances. 2. All dimensions have been provided by our consultant architects. 3. All materials, dimensions & drawings are approximate. Information is subject to change without notice. 4. Actual suite area may vary from the stated area. Drawings not to scale. The developer reserves the right to make revisions. 5. Calculation of suite area is measured as the area bounded by the centre line of demising or partition walls separating one unit from another unit, the exterior face of all exterior walls, and the exterior face of the corridor wall enclosing the adjoining unit. 6. Calculation of balcony area is measured as the area bounded by the centre line of demising or partition walls separating one unit from another unit, the outmost face of the enclosing guard and the external face of the unit adjoining the balcony. 7. The units are measured at typical floor in the building. Columns may vary in size depending on the floor level.

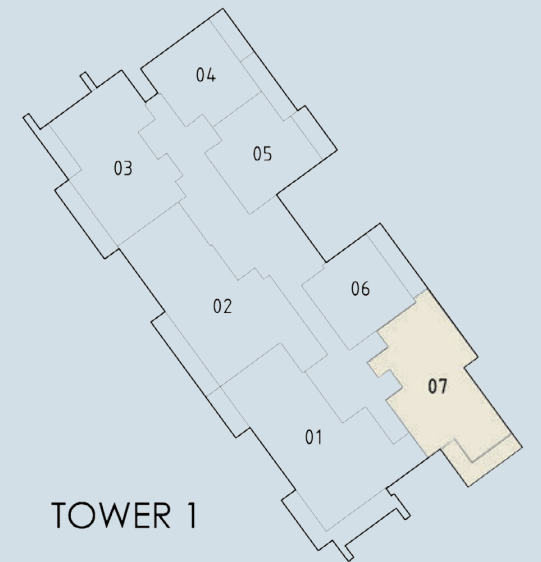
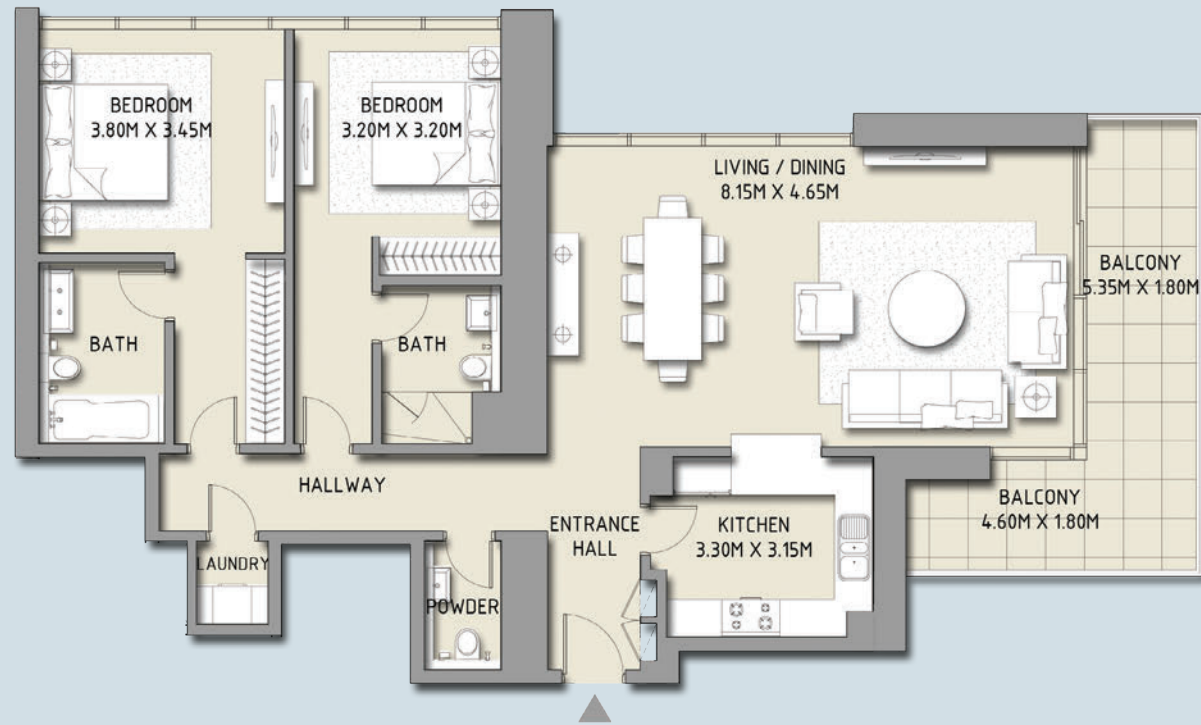
BLVD CRESCENT

2 Bedroom

Unit 07

Level 02 - 12

Tower 1



SUITE AREA:

125.46 SQ.M (1350.44 SQ.FT)

BALCONY AREA:

17.50 SQ.M (188.37 SQ.FT)

TOTAL AREA:

142.96 SQ.M (1538.81 SQ.FT)

Disclaimer: 1. All room dimensions are measured to structural elements and exclude wall finishes and construction tolerances. 2. All dimensions have been provided by our consultant architects. 3. All materials, dimensions & drawings are approximate. Information is subject to change without notice. 4. Actual suite area may vary from the stated area. Drawings not to scale. The developer reserves the right to make revisions. 5. Calculation of suite area is measured as the area bounded by the centre line of demising or partition walls separating one unit from another unit, the exterior face of all exterior walls, and the exterior face of the corridor wall enclosing the adjoining unit. 6. Calculation of balcony area is measured as the area bounded by the centre line of demising or partition walls separating one unit from another unit, the outmost face of the enclosing guard and the external face of the unit adjoining the balcony. 7. The units are measured at typical floor in the building. Columns may vary in size depending on the floor level.

BLVD CRESCENT

3 Bedroom

Unit 01

Level 10 & 30

Tower 1



SUITE AREA:
BALCONY AREA:

164.02 SQ.M (1765.50 SQ.FT)
35.73 SQ.M (384.59 SQ.FT)

TOTAL AREA:

199.75 SQ.M (2150.09 SQ.FT)

Disclaimer: 1. All room dimensions are measured to structural elements and exclude wall finishes and construction tolerances. 2. All dimensions have been provided by our consultant architects. 3. All materials, dimensions & drawings are approximate. Information is subject to change without notice. 4. Actual suite area may vary from the stated area. Drawings not to scale. The developer reserves the right to make revisions. 5. Calculation of suite area is measured as the area bounded by the centre line of demising or partition walls separating one unit from another unit, the exterior face of all exterior walls, and the exterior face of the corridor wall enclosing the adjoining unit. 6. Calculation of balcony area is measured as the area bounded by the centre line of demising or partition walls separating one unit from another unit, the outmost face of the enclosing guard and the external face of the unit adjoining the balcony. 7. The units are measured at typical floor in the building. Columns may vary in size depending on the floor level.

BLVD CRESCENT

3 Bedroom

Unit 01

Level

02 - 09, 11 - 20, 22 - 29, 31 - 37

Tower 1



SUITE AREA:
BALCONY AREA:

171.03 SQ.M (1840.95 SQ.FT)
35.73 SQ.M (384.59 SQ.FT)

TOTAL AREA:

206.76 SQ.M (2225.55 SQ.FT)

Disclaimer: 1. All room dimensions are measured to structural elements and exclude wall finishes and construction tolerances. 2. All dimensions have been provided by our consultant architects. 3. All materials, dimensions & drawings are approximate. Information is subject to change without notice. 4. Actual suite area may vary from the stated area. Drawings not to scale. The developer reserves the right to make revisions. 5. Calculation of suite area is measured as the area bounded by the centre line of demising or partition walls separating one unit from another unit, the exterior face of all exterior walls, and the exterior face of the corridor wall enclosing the adjoining unit. 6. Calculation of balcony area is measured as the area bounded by the centre line of demising or partition walls separating one unit from another unit, the outmost face of the enclosing guard and the external face of the unit adjoining the balcony. 7. The units are measured at typical floor in the building. Columns may vary in size depending on the floor level.

BLVD CRESCENT

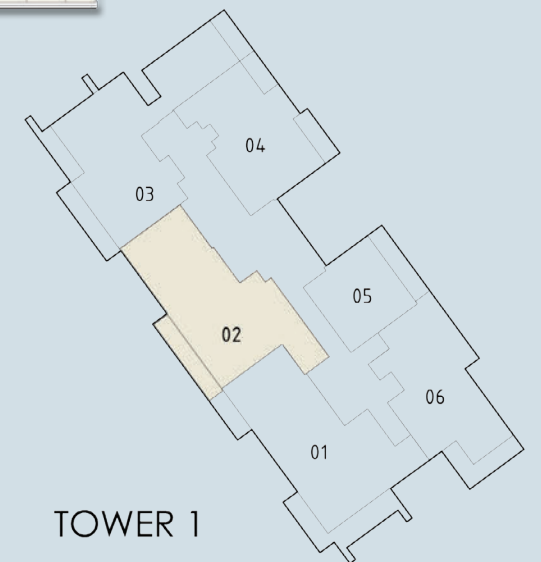
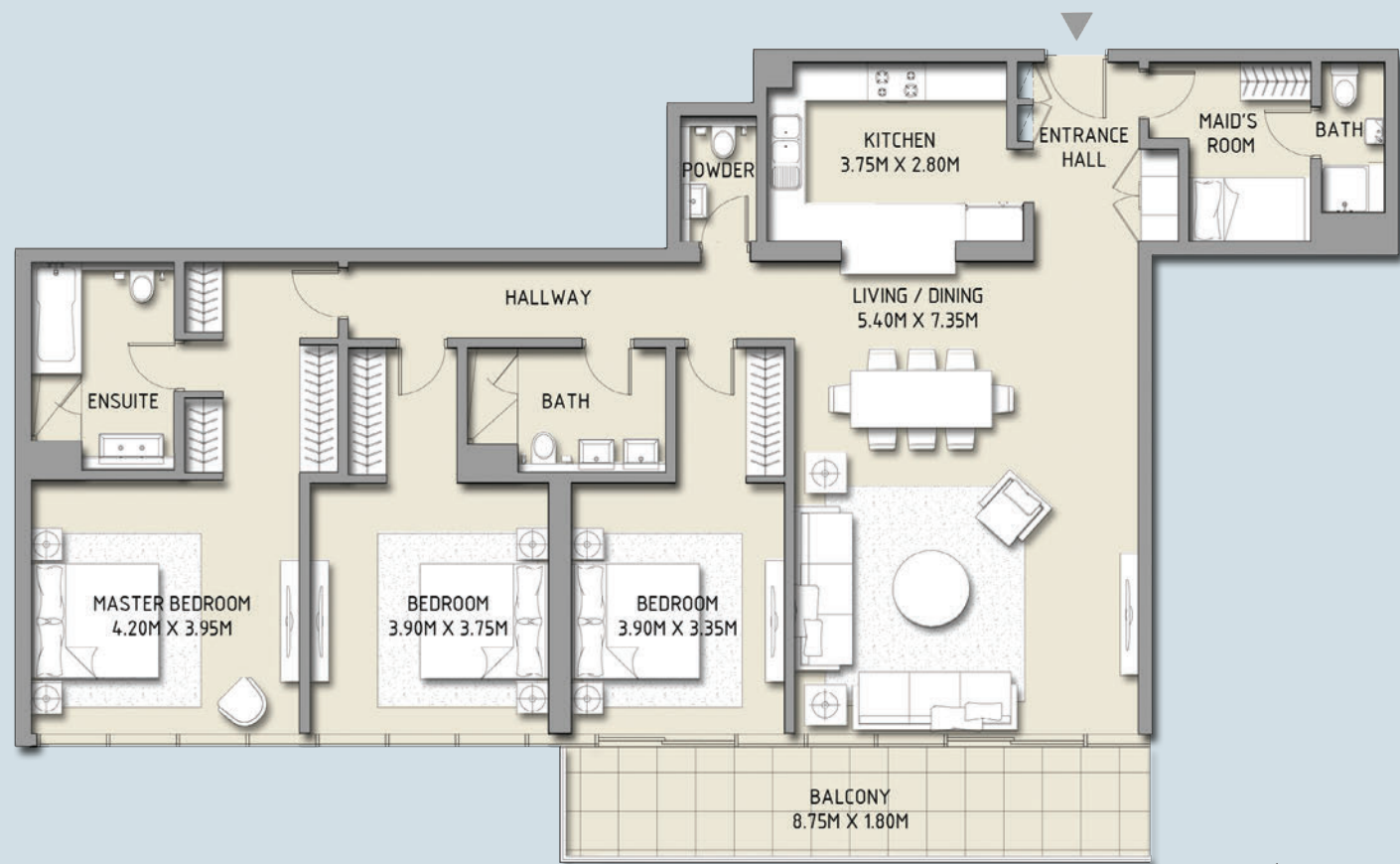
3 Bedroom

Unit 02

Level

13 - 20, 22 - 37

Tower 1



SUITE AREA:
BALCONY AREA:

166.96 SQ.M (1797.14 SQ.FT)
15.97 SQ.M (171.90 SQ.FT)

TOTAL AREA:

182.93 SQ.M (1969.04 SQ.FT)

Disclaimer: 1. All room dimensions are measured to structural elements and exclude wall finishes and construction tolerances. 2. All dimensions have been provided by our consultant architects. 3. All materials, dimensions & drawings are approximate. Information is subject to change without notice. 4. Actual suite area may vary from the stated area. Drawings not to scale. The developer reserves the right to make revisions. 5. Calculation of suite area is measured as the area bounded by the centre line of demising or partition walls separating one unit from another unit, the exterior face of all exterior walls, and the exterior face of the corridor wall enclosing the adjoining unit. 6. Calculation of balcony area is measured as the area bounded by the centre line of demising or partition walls separating one unit from another unit, the outmost face of the enclosing guard and the external face of the unit adjoining the balcony. 7. The units are measured at typical floor in the building. Columns may vary in size depending on the floor level.

BLVD CRESCENT

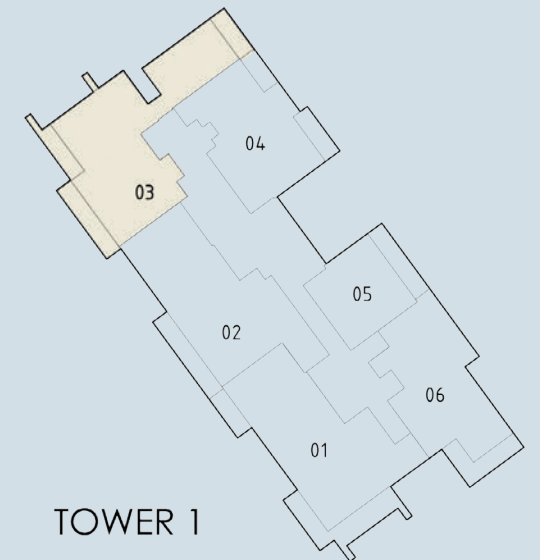
3 Bedroom

Unit 03

Level

13 - 20, 22 - 37

Tower 1



SUITE AREA:
BALCONY AREA:

171.09 SQ.M (1841.60 SQ.FT)
33.08 SQ.M (356.07 SQ.FT)

TOTAL AREA:

204.17 SQ.M (2197.67 SQ.FT)

Disclaimer: 1. All room dimensions are measured to structural elements and exclude wall finishes and construction tolerances. 2. All dimensions have been provided by our consultant architects. 3. All materials, dimensions & drawings are approximate. Information is subject to change without notice. 4. Actual suite area may vary from the stated area. Drawings not to scale. The developer reserves the right to make revisions. 5. Calculation of suite area is measured as the area bounded by the centre line of demising or partition walls separating one unit from another unit, the exterior face of all exterior walls, and the exterior face of the corridor wall enclosing the adjoining unit. 6. Calculation of balcony area is measured as the area bounded by the centre line of demising or partition walls separating one unit from another unit, the outmost face of the enclosing guard and the external face of the unit adjoining the balcony. 7. The units are measured at typical floor in the building. Columns may vary in size depending on the floor level.

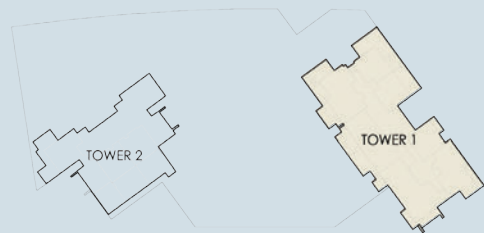
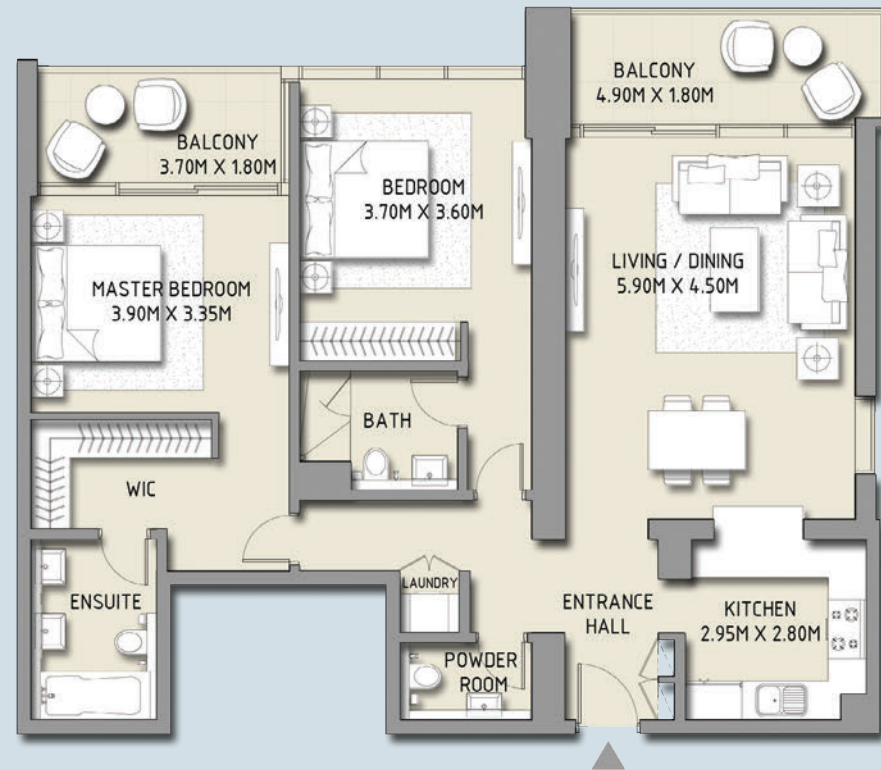
BLVD CRESCENT

2 Bedroom

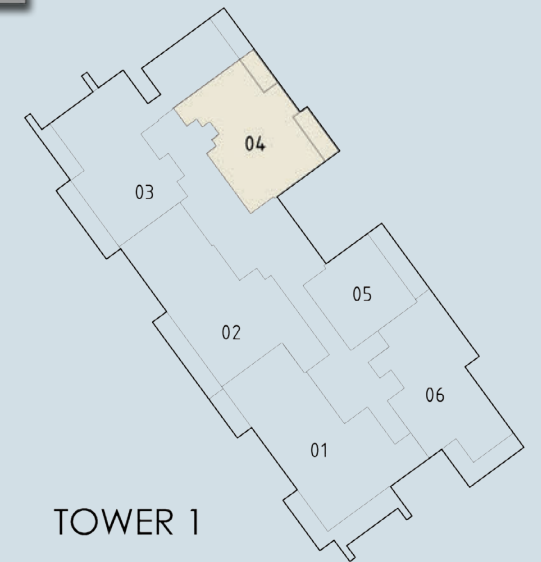
Unit 04

Level
13 - 20, 22 - 37

Tower 1



SITE PLAN



TOWER 1



SUITE AREA:
BALCONY AREA:

114.14 SQ.M (1228.59 SQ.FT)
16.32 SQ.M (175.67 SQ.FT)

TOTAL AREA:

130.46 SQ.M (1404.26 SQ.FT)

Disclaimer: 1. All room dimensions are measured to structural elements and exclude wall finishes and construction tolerances. 2. All dimensions have been provided by our consultant architects. 3. All materials, dimensions & drawings are approximate. Information is subject to change without notice. 4. Actual suite area may vary from the stated area. Drawings not to scale. The developer reserves the right to make revisions. 5. Calculation of suite area is measured as the area bounded by the centre line of demising or partition walls separating one unit from another unit, the exterior face of all exterior walls, and the exterior face of the corridor wall enclosing the adjoining unit. 6. Calculation of balcony area is measured as the area bounded by the centre line of demising or partition walls separating one unit from another unit, the outmost face of the enclosing guard and the external face of the unit adjoining the balcony. 7. The units are measured at typical floor in the building. Columns may vary in size depending on the floor level.

BLVD CRESCENT

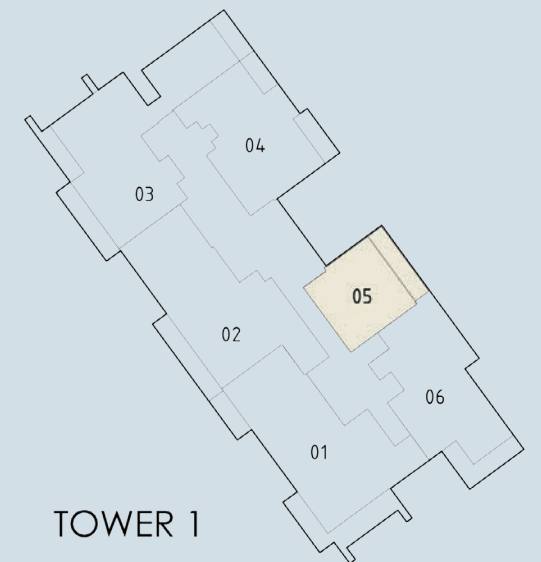
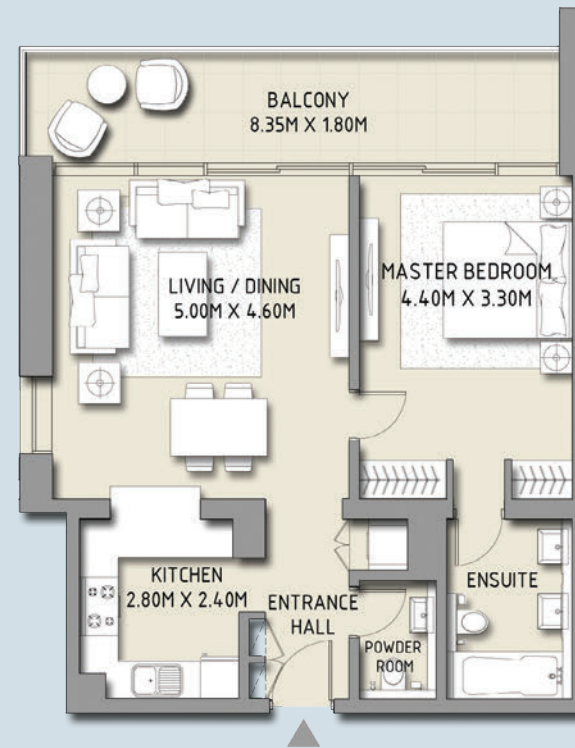
1 Bedroom

Unit 05

Level

13 - 20, 22 - 37

Tower 1



SUITE AREA:	69.15 SQ.M	(744.32 SQ.FT)
BALCONY AREA:	15.27 SQ.M	(164.36 SQ.FT)
TOTAL AREA:	84.42 SQ.M	(908.69 SQ.FT)

Disclaimer: 1. All room dimensions are measured to structural elements and exclude wall finishes and construction tolerances. 2. All dimensions have been provided by our consultant architects. 3. All materials, dimensions & drawings are approximate. Information is subject to change without notice. 4. Actual suite area may vary from the stated area. Drawings not to scale. The developer reserves the right to make revisions. 5. Calculation of suite area is measured as the area bounded by the centre line of demising or partition walls separating one unit from another unit, the exterior face of all exterior walls, and the exterior face of the corridor wall enclosing the adjoining unit. 6. Calculation of balcony area is measured as the area bounded by the centre line of demising or partition walls separating one unit from another unit, the outmost face of the enclosing guard and the external face of the unit adjoining the balcony. 7. The units are measured at typical floor in the building. Columns may vary in size depending on the floor level.

BLVD CRESCENT

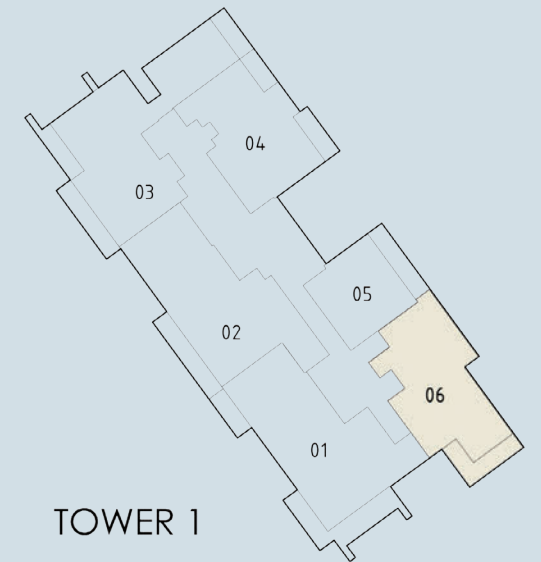
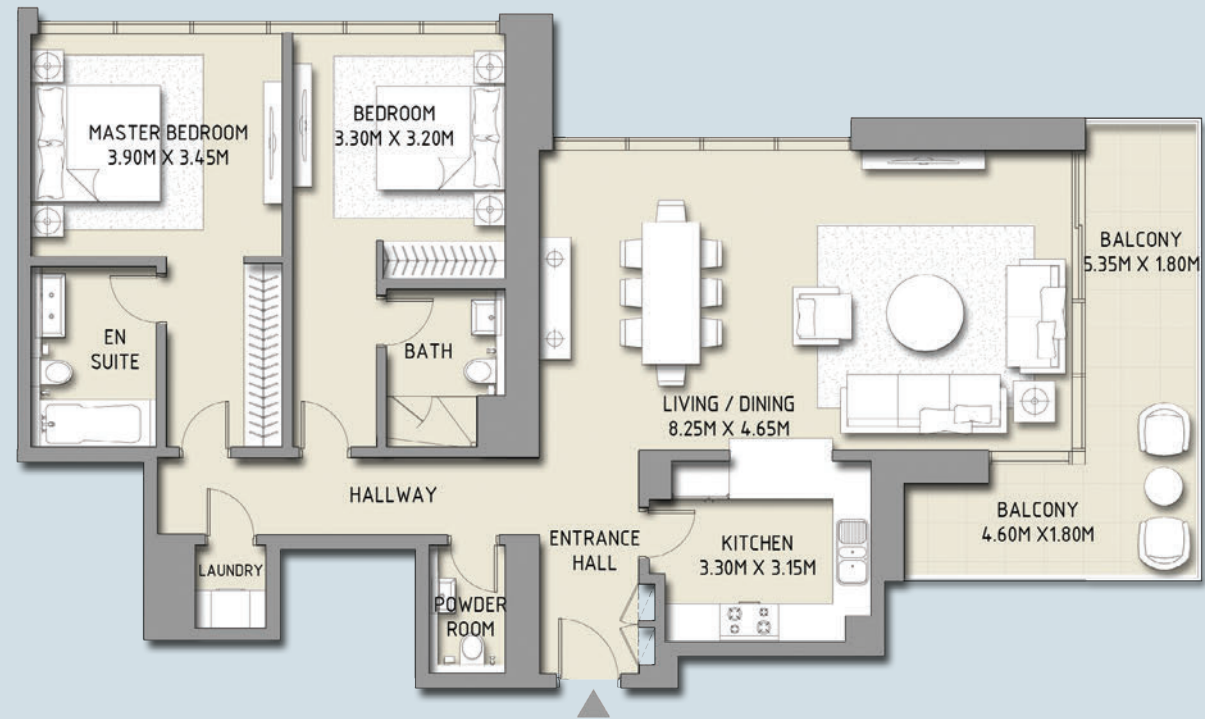
2 Bedroom

Unit 06

Level

13 - 20, 22 - 37

Tower 1



SUITE AREA:
BALCONY AREA:

125.33 SQ.M (1349.04 SQ.FT)
17.51 SQ.M (188.48 SQ.FT)

TOTAL AREA:

142.84 SQ.M (1537.52 SQ.FT)

Disclaimer: 1. All room dimensions are measured to structural elements and exclude wall finishes and construction tolerances. 2. All dimensions have been provided by our consultant architects. 3. All materials, dimensions & drawings are approximate. Information is subject to change without notice. 4. Actual suite area may vary from the stated area. Drawings not to scale. The developer reserves the right to make revisions. 5. Calculation of suite area is measured as the area bounded by the centre line of demising or partition walls separating one unit from another unit, the exterior face of all exterior walls, and the exterior face of the corridor wall enclosing the adjoining unit. 6. Calculation of balcony area is measured as the area bounded by the centre line of demising or partition walls separating one unit from another unit, the outmost face of the enclosing guard and the external face of the unit adjoining the balcony. 7. The units are measured at typical floor in the building. Columns may vary in size depending on the floor level.

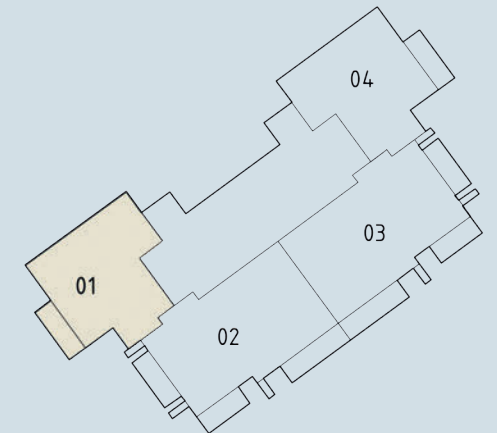
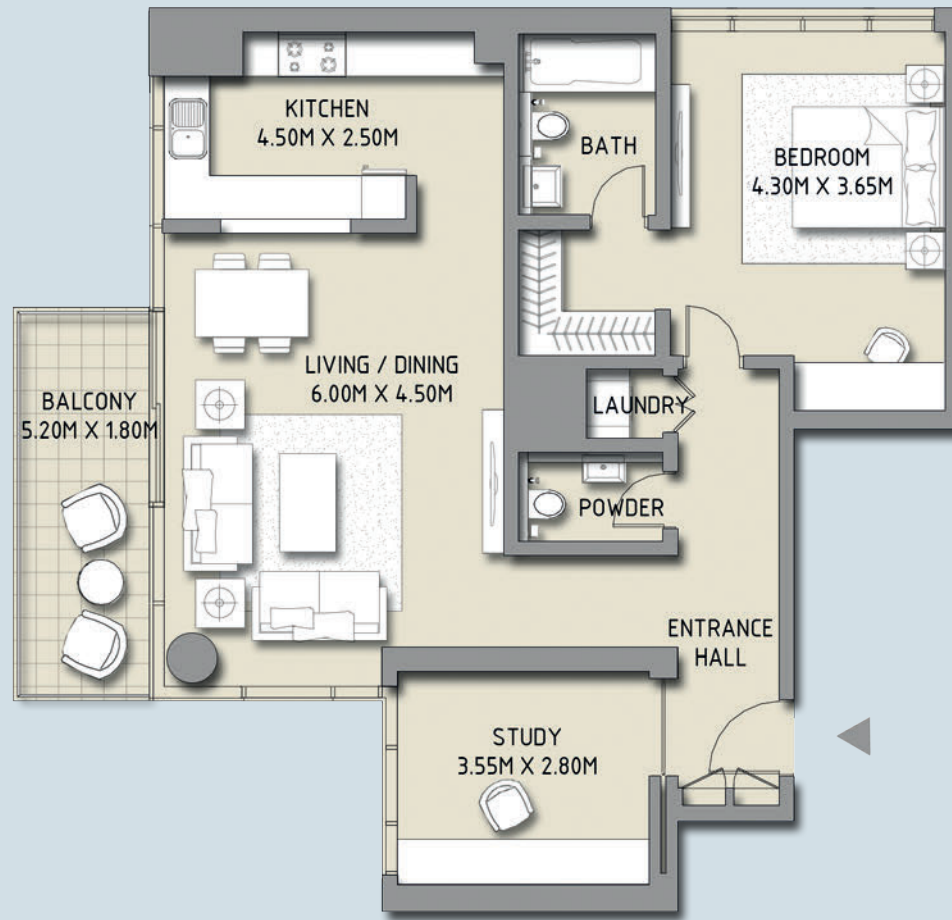
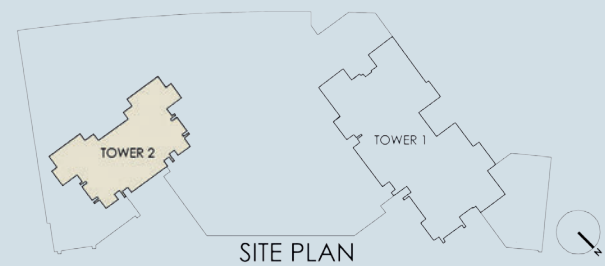
BLVD CRESCENT

1 Bedroom + Study

Unit 01

Level 02 - 18

Tower 2



SUITE AREA:
BALCONY AREA:

98.91 SQ.M (1064.66 SQ.FT)
8.84 SQ.M (95.15 SQ.FT)

TOTAL AREA:

107.75 SQ.M (1159.81 SQ.FT)

Disclaimer: 1. All room dimensions are measured to structural elements and exclude wall finishes and construction tolerances. 2. All dimensions have been provided by our consultant architects. 3. All materials, dimensions & drawings are approximate. Information is subject to change without notice. 4. Actual suite area may vary from the stated area. Drawings not to scale. The developer reserves the right to make revisions. 5. Calculation of suite area is measured as the area bounded by the centre line of demising or partition walls separating one unit from another unit, the exterior face of all exterior walls, and the exterior face of the corridor wall enclosing the adjoining unit. 6. Calculation of balcony area is measured as the area bounded by the centre line of demising or partition walls separating one unit from another unit, the outmost face of the enclosing guard and the external face of the unit adjoining the balcony. 7. The units are measured at typical floor in the building. Columns may vary in size depending on the floor level.

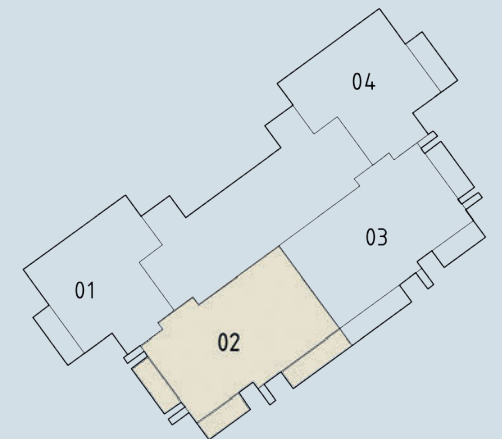
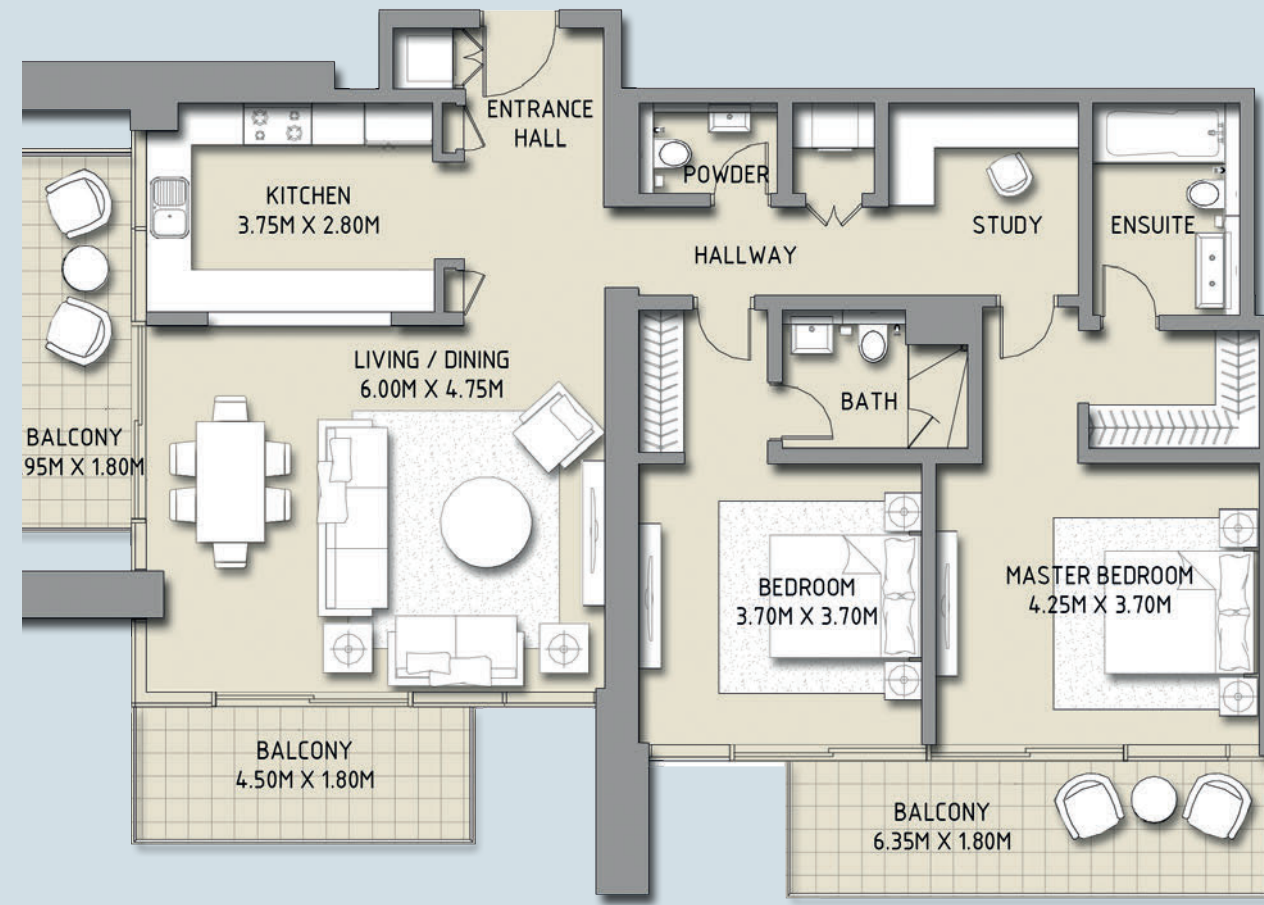
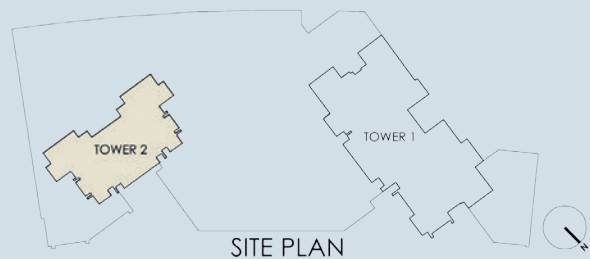
BLVD CRESCENT

2 Bedroom

Unit 02

Level 02 - 18

Tower 2



SUITE AREA:
BALCONY AREA:

127.38 SQ.M (1371.11 SQ.FT)
27.78 SQ.M (299.02 SQ.FT)

TOTAL AREA:

155.16 SQ.M (1670.13 SQ.FT)

Disclaimer: 1. All room dimensions are measured to structural elements and exclude wall finishes and construction tolerances. 2. All dimensions have been provided by our consultant architects. 3. All materials, dimensions & drawings are approximate. Information is subject to change without notice. 4. Actual suite area may vary from the stated area. Drawings not to scale. The developer reserves the right to make revisions. 5. Calculation of suite area is measured as the area bounded by the centre line of demising or partition walls separating one unit from another unit, the exterior face of all exterior walls, and the exterior face of the corridor wall enclosing the adjoining unit. 6. Calculation of balcony area is measured as the area bounded by the centre line of demising or partition walls separating one unit from another unit, the outmost face of the enclosing guard and the external face of the unit adjoining the balcony. 7. The units are measured at typical floor in the building. Columns may vary in size depending on the floor level.

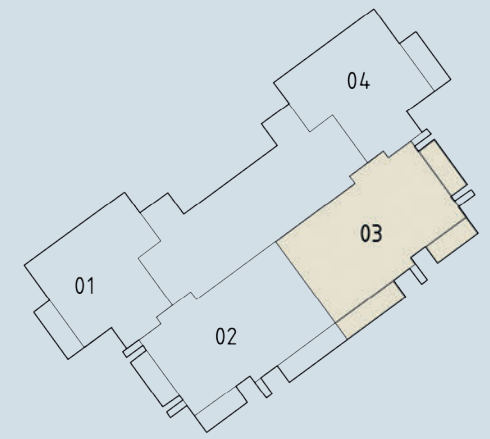
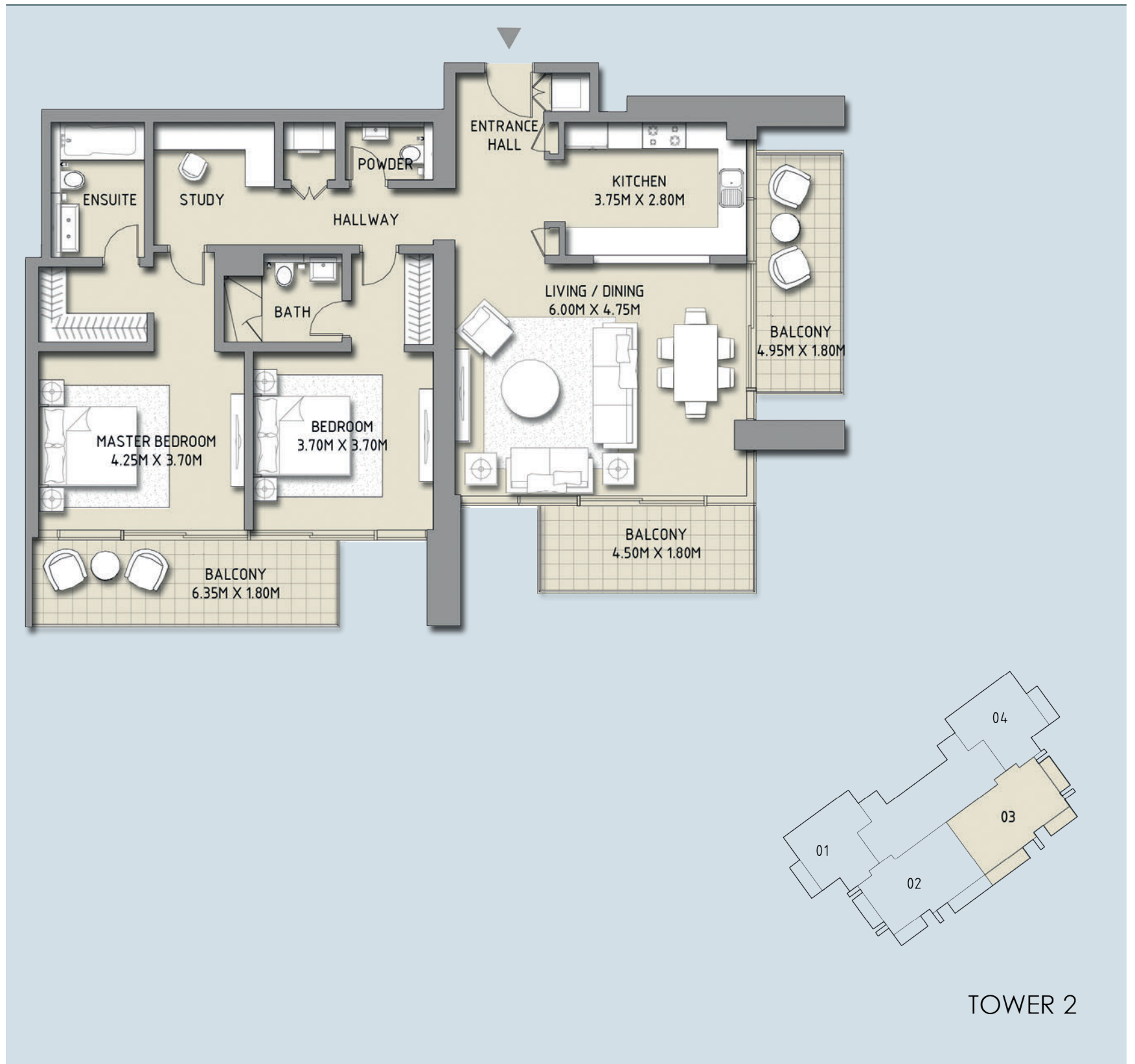
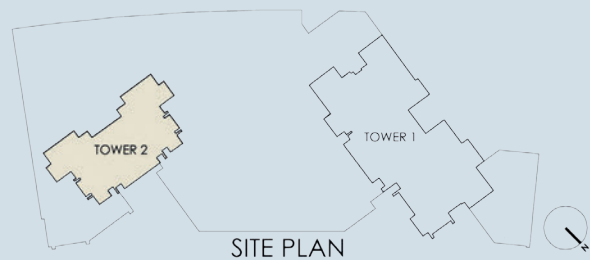
BLVD CRESCENT

2 Bedroom

Unit 03

Level 02 - 18

Tower 2



TOWER 2



SUITE AREA:	127.38 SQ.M (1371.11 SQ.FT)
BALCONY AREA:	27.78 SQ.M (299.02 SQ.FT)
<hr/>	<hr/>
TOTAL AREA:	155.16 SQ.M (1670.13 SQ.FT)

Disclaimer: 1. All room dimensions are measured to structural elements and exclude wall finishes and construction tolerances. 2. All dimensions have been provided by our consultant architects. 3. All materials, dimensions & drawings are approximate. Information is subject to change without notice. 4. Actual suite area may vary from the stated area. Drawings not to scale. The developer reserves the right to make revisions. 5. Calculation of suite area is measured as the area bounded by the centre line of demising or partition walls separating one unit from another unit, the exterior face of all exterior walls, and the exterior face of the corridor wall enclosing the adjoining unit. 6. Calculation of balcony area is measured as the area bounded by the centre line of demising or partition walls separating one unit from another unit, the outmost face of the enclosing guard and the external face of the unit adjoining the balcony. 7. The units are measured at typical floor in the building. Columns may vary in size depending on the floor level.

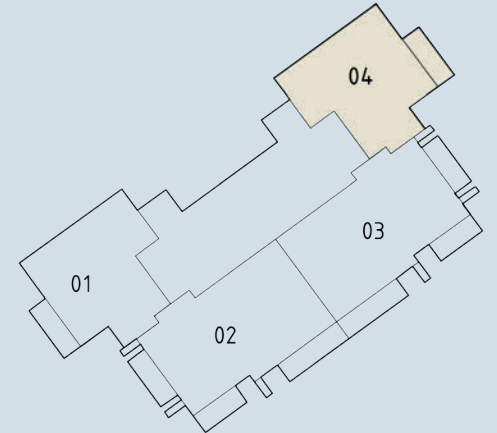
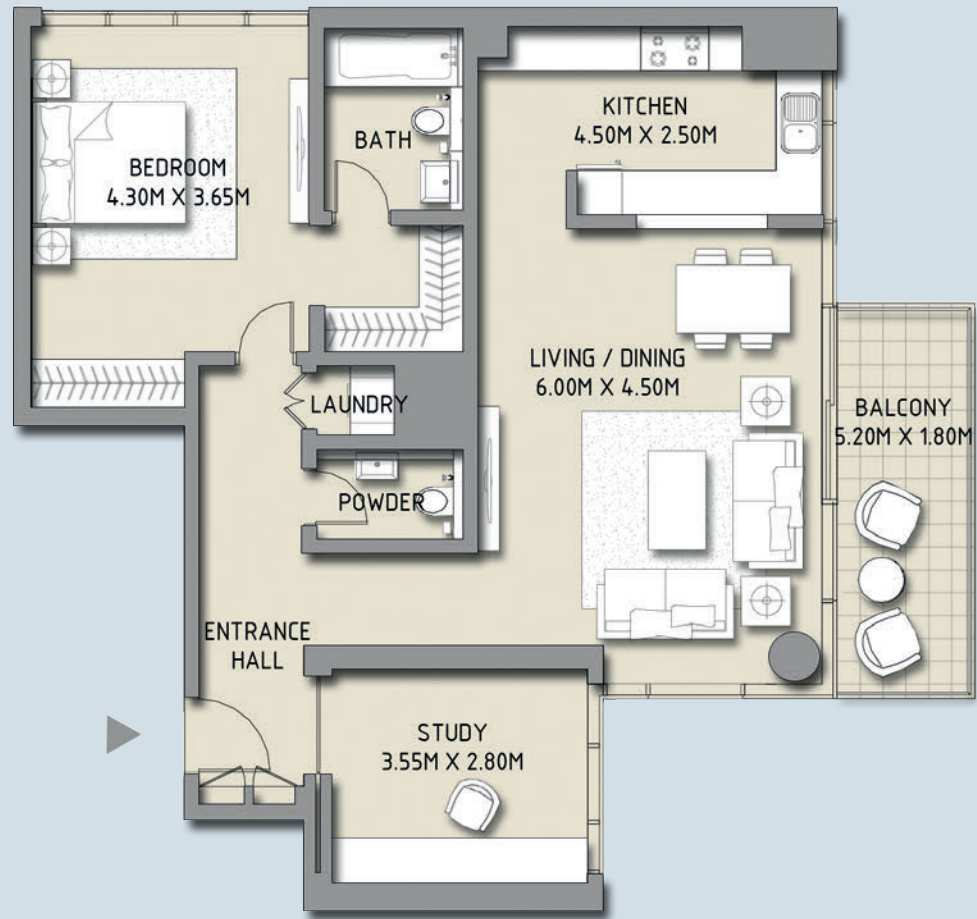
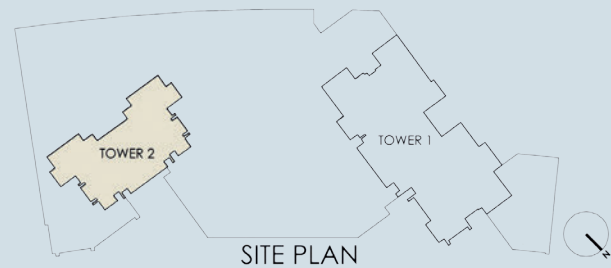
BLVD CRESCENT

1 Bedroom + Study

Unit 04

Level 02 - 18

Tower 2



SUITE AREA:	98.91 SQ.M (1064.66 SQ.FT)
BALCONY AREA:	8.84 SQ.M (95.15 SQ.FT)
TOTAL AREA:	107.75 SQ.M (1159.81 SQ.FT)

Disclaimer: 1. All room dimensions are measured to structural elements and exclude wall finishes and construction tolerances. 2. All dimensions have been provided by our consultant architects. 3. All materials, dimensions & drawings are approximate. Information is subject to change without notice. 4. Actual suite area may vary from the stated area. Drawings not to scale. The developer reserves the right to make revisions. 5. Calculation of suite area is measured as the area bounded by the centre line of demising or partition walls separating one unit from another unit, the exterior face of all exterior walls, and the exterior face of the corridor wall enclosing the adjoining unit. 6. Calculation of balcony area is measured as the area bounded by the centre line of demising or partition walls separating one unit from another unit, the outmost face of the enclosing guard and the external face of the unit adjoining the balcony. 7. The units are measured at typical floor in the building. Columns may vary in size depending on the floor level.

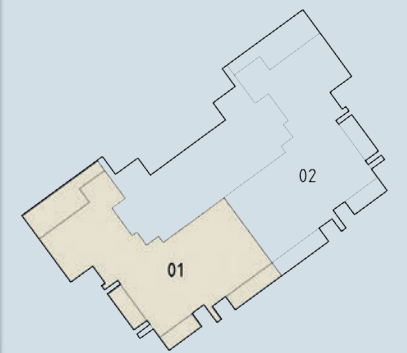
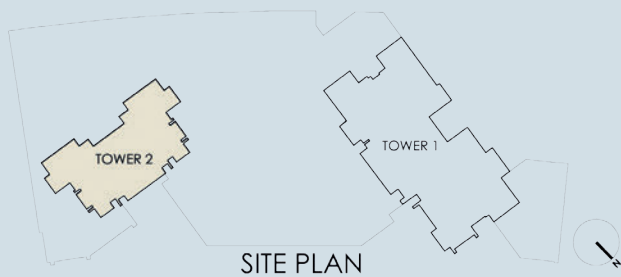
BLVD CRESCENT

3 Bedroom

Unit 01

Level 19

Tower 2



SUITE AREA:
BALCONY AREA:

201.77 SQ.M (2171.83 SQ.FT)
55.30 SQ.M (595.24 SQ.FT)

TOTAL AREA:

257.07 SQ.M (2767.08 SQ.FT)

Disclaimer: 1. All room dimensions are measured to structural elements and exclude wall finishes and construction tolerances. 2. All dimensions have been provided by our consultant architects. 3. All materials, dimensions & drawings are approximate. Information is subject to change without notice. 4. Actual suite area may vary from the stated area. Drawings not to scale. The developer reserves the right to make revisions. 5. Calculation of suite area is measured as the area bounded by the centre line of demising or partition walls separating one unit from another unit, the exterior face of all exterior walls, and the exterior face of the corridor wall enclosing the adjoining unit. 6. Calculation of balcony area is measured as the area bounded by the centre line of demising or partition walls separating one unit from another unit, the outmost face of the enclosing guard and the external face of the unit adjoining the balcony. 7. The units are measured at typical floor in the building. Columns may vary in size depending on the floor level.

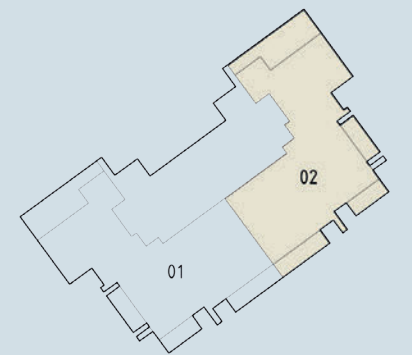
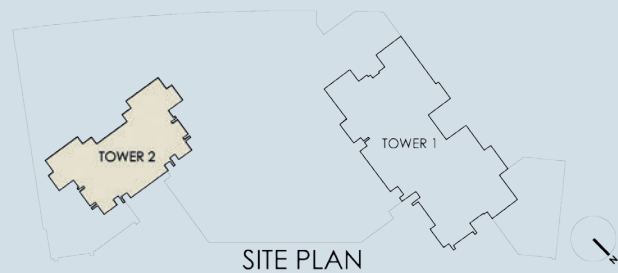
BLVD CRESCENT

3 Bedroom

Unit 02

Level 19

Tower 2



TOWER 2



SUITE AREA:
BALCONY AREA:

201.77 SQ.M (2171.83 SQ.FT)
55.30 SQ.M (595.24 SQ.FT)

TOTAL AREA:

257.07 SQ.M (2767.08 SQ.FT)

Disclaimer: 1. All room dimensions are measured to structural elements and exclude wall finishes and construction tolerances. 2. All dimensions have been provided by our consultant architects. 3. All materials, dimensions & drawings are approximate. Information is subject to change without notice. 4. Actual suite area may vary from the stated area. Drawings not to scale. The developer reserves the right to make revisions. 5. Calculation of suite area is measured as the area bounded by the centre line of demising or partition walls separating one unit from another unit, the exterior face of all exterior walls, and the exterior face of the corridor wall enclosing the adjoining unit. 6. Calculation of balcony area is measured as the area bounded by the centre line of demising or partition walls separating one unit from another unit, the outmost face of the enclosing guard and the external face of the unit adjoining the balcony. 7. The units are measured at typical floor in the building. Columns may vary in size depending on the floor level.

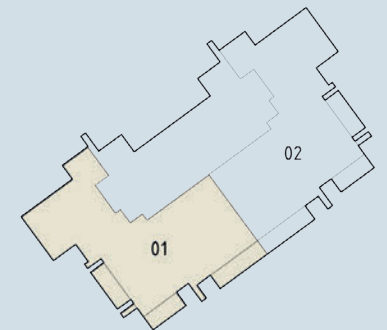
BLVD CRESCENT

3 Bedroom

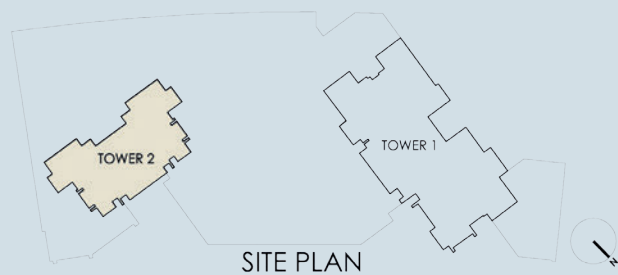
Unit 01

Level 20

Tower 2



TOWER 2



SITE PLAN



SUITE AREA:
BALCONY AREA:

201.77 SQ.M (2171.83 SQ.FT)
27.78 SQ.M (299.02 SQ.FT)

TOTAL AREA:

229.55 SQ.M (2470.86 SQ.FT)

Disclaimer: 1. All room dimensions are measured to structural elements and exclude wall finishes and construction tolerances. 2. All dimensions have been provided by our consultant architects. 3. All materials, dimensions & drawings are approximate. Information is subject to change without notice. 4. Actual suite area may vary from the stated area. Drawings not to scale. The developer reserves the right to make revisions. 5. Calculation of suite area is measured as the area bounded by the centre line of demising or partition walls separating one unit from another unit, the exterior face of all exterior walls, and the exterior face of the corridor wall enclosing the adjoining unit. 6. Calculation of balcony area is measured as the area bounded by the centre line of demising or partition walls separating one unit from another unit, the outmost face of the enclosing guard and the external face of the unit adjoining the balcony. 7. The units are measured at typical floor in the building. Columns may vary in size depending on the floor level.

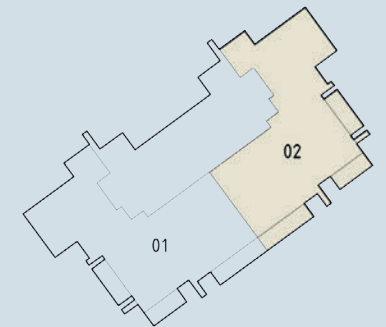
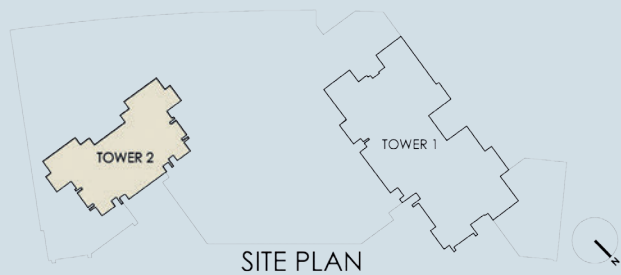
BLVD CRESCENT

3 Bedroom

Unit 02

Level 20

Tower 2



TOWER 2



SUITE AREA:
BALCONY AREA:

201.77 SQ.M (2171.83 SQ.FT)
27.78 SQ.M (299.02 SQ.FT)

TOTAL AREA:

229.55 SQ.M (2470.86 SQ.FT)

Disclaimer: 1. All room dimensions are measured to structural elements and exclude wall finishes and construction tolerances. 2. All dimensions have been provided by our consultant architects. 3. All materials, dimensions & drawings are approximate. Information is subject to change without notice. 4. Actual suite area may vary from the stated area. Drawings not to scale. The developer reserves the right to make revisions. 5. Calculation of suite area is measured as the area bounded by the centre line of demising or partition walls separating one unit from another unit, the exterior face of all exterior walls, and the exterior face of the corridor wall enclosing the adjoining unit. 6. Calculation of balcony area is measured as the area bounded by the centre line of demising or partition walls separating one unit from another unit, the outmost face of the enclosing guard and the external face of the unit adjoining the balcony. 7. The units are measured at typical floor in the building. Columns may vary in size depending on the floor level.