

DUBAI HILLS ESTATE

DUBAI HILLS  
VISTA

INSPIRED BY

*automobili*  
**Lamborghini**

---

FLOOR PLANS

EMAAR

# DUBAI HILLS VISTA

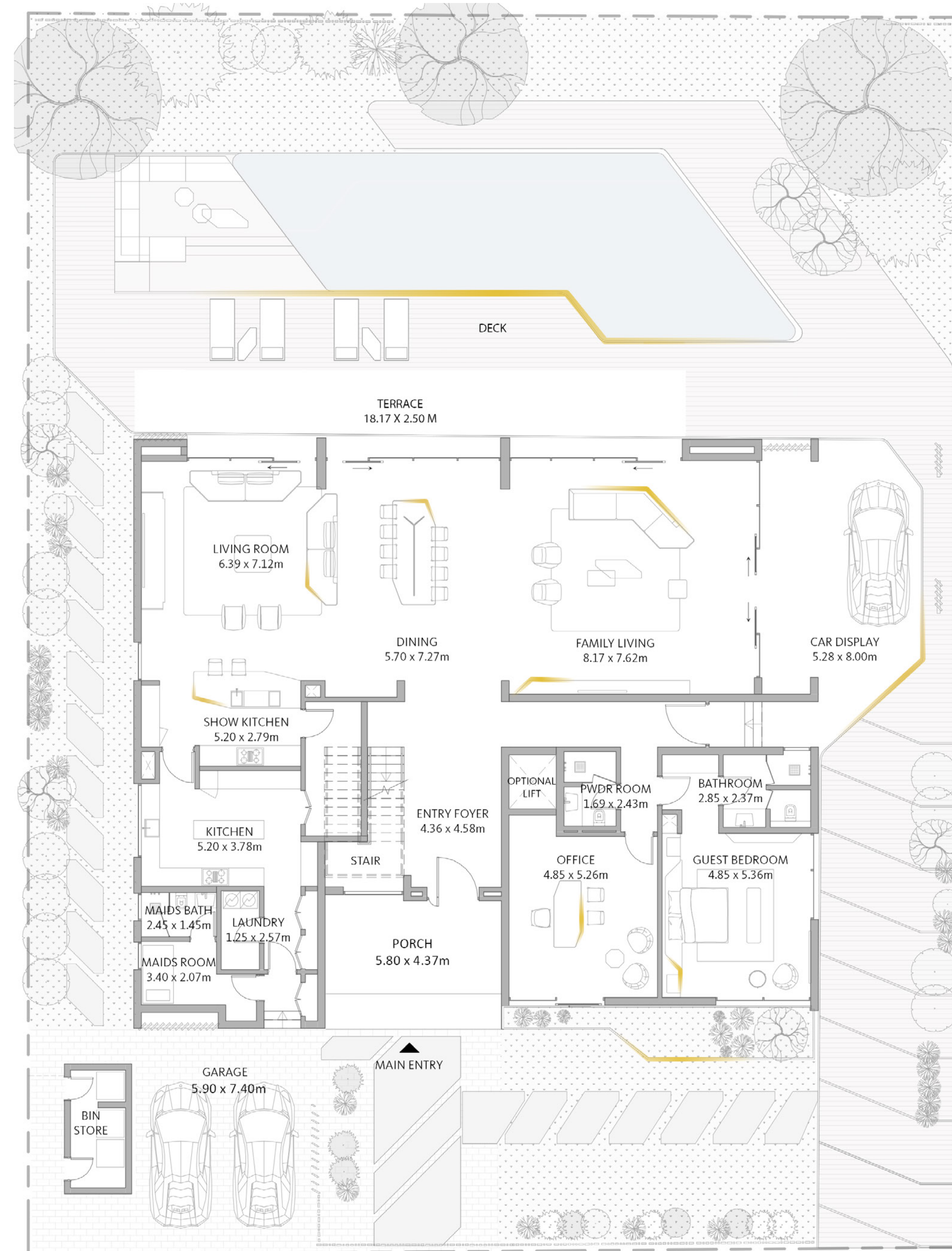
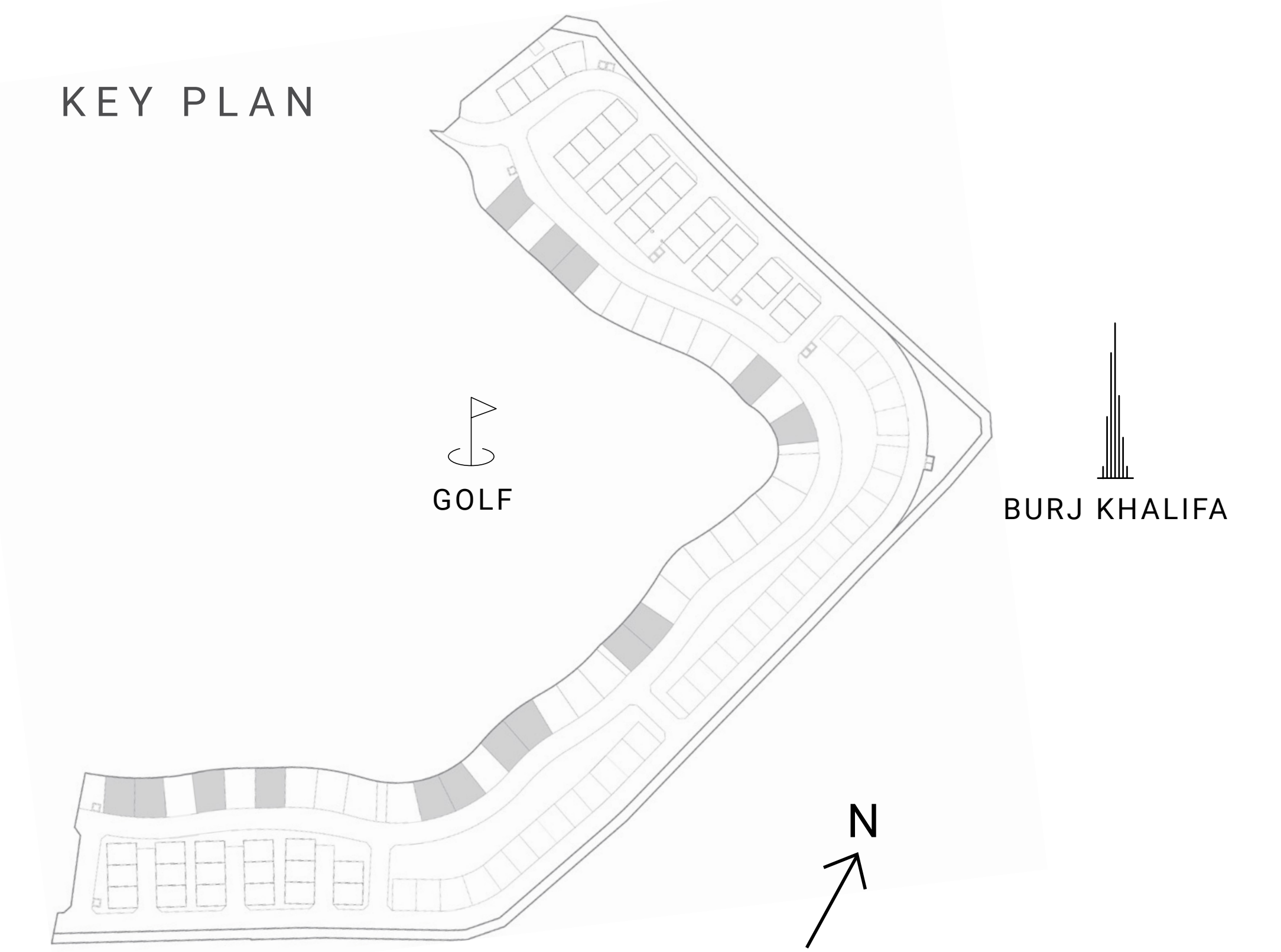
INSPIRED BY

*automobili*  
**Lamborghini**

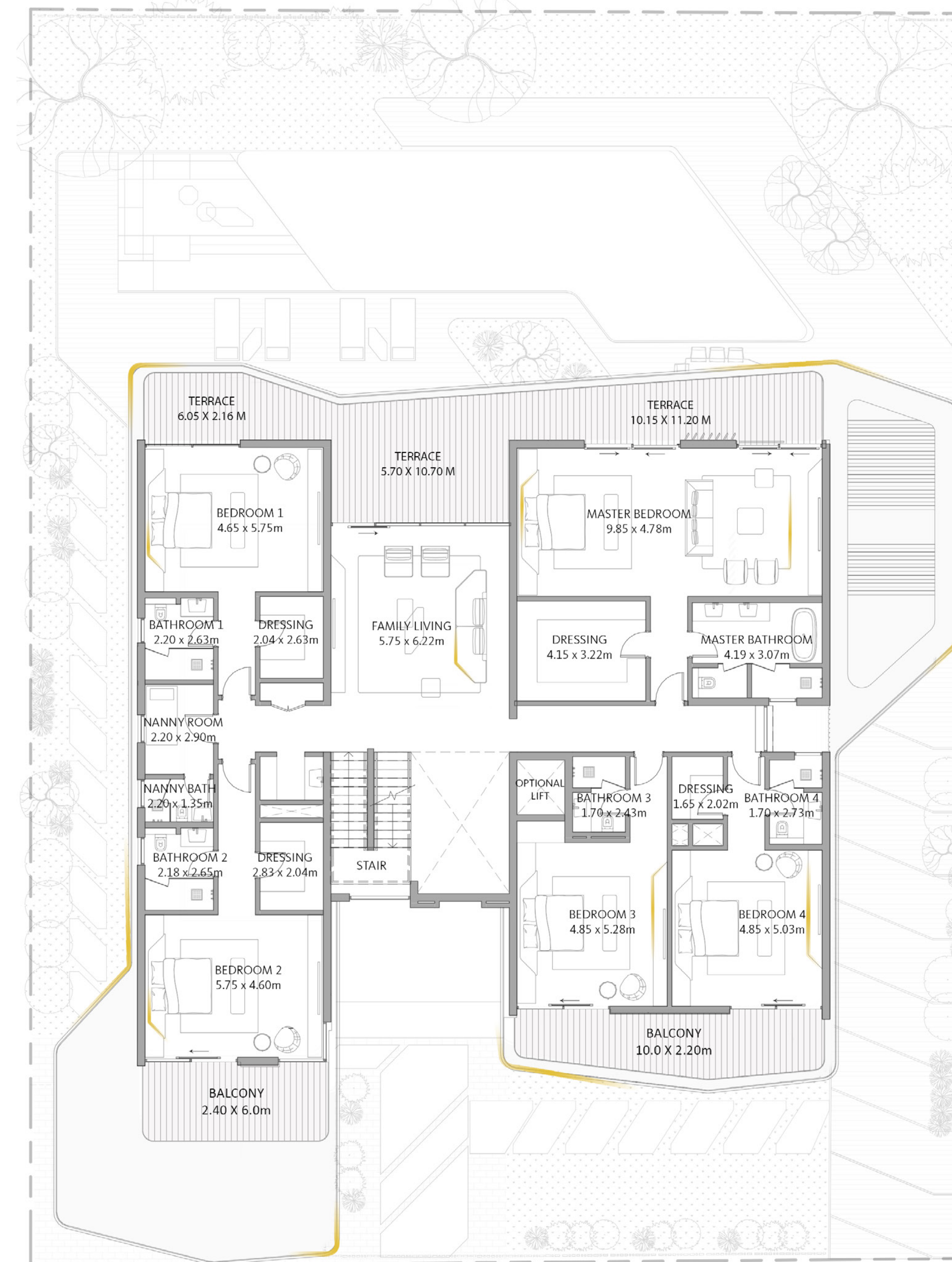
V8 COLLECTION

<b>SUITE AREA</b>	8877 SQ.FT.	824.70 SQ.M.
<b>GARAGE</b>	903.10 SQ.FT	83.9 SQ.M
<b>TERRACE AREA</b>	426.25 SQ.FT.	39.60 SQ.M.
<b>BALCONY</b>	1637.08 SQ.FT.	152.09 SQ.M.
<b>TOTAL AREA</b>	11843.42 SQ.FT.	1100.29 SQ.M.
<b>TOTAL BUA</b>	14207.29 SQ.FT.	1319.90 SQ.M.

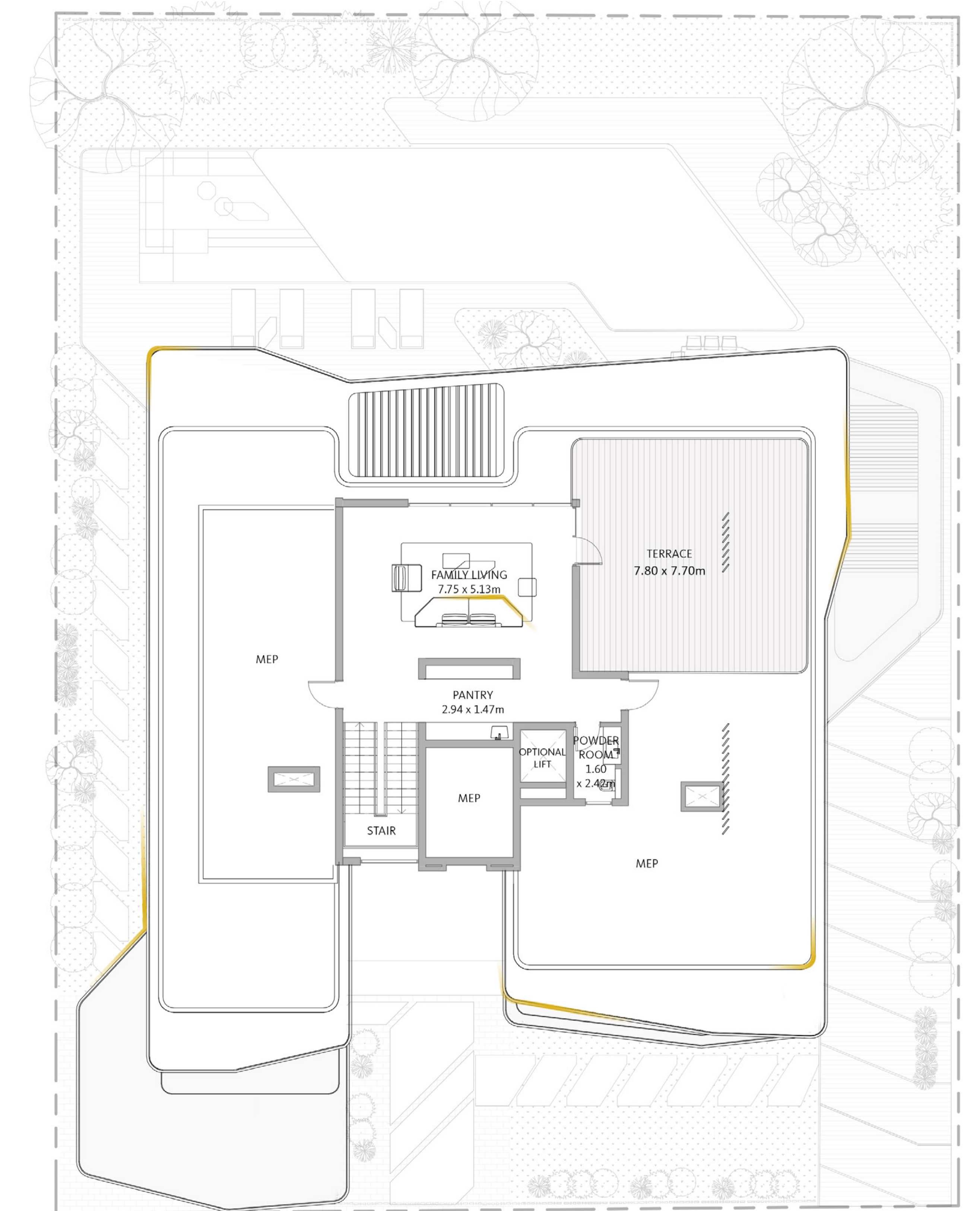
KEY PLAN



GROUND FLOOR



FIRST FLOOR



ROOF FLOOR

**FLOOR PLAN 1.** All dimensions are in imperial and metric, and measured from finish to finish excluding construction tolerances. 2. All materials, dimensions, and drawings are approximate only. 3. Information is subject to change without notice, at developer's absolute discretion. 4. Actual area may vary from the stated area. 5. Drawings not to scale. 6. All images used are for illustrative purposes only and do not represent the actual size, features, specifications, fittings, and furnishings. 7. The developer reserves the right to make revisions / alterations, at its absolute discretion, without any liability whatsoever. 8. The involvement of Automobili Lamborghini S.p.A. in this project is limited to the concepts for the interior design of the Residential Building and to the supply of certain Automobili Lamborghini products provided by EMAAR to the purchasers of the Private Residences. The respective owners of the Private Residence are not authorised to use the Automobili Lamborghini trademarks under any circumstances.

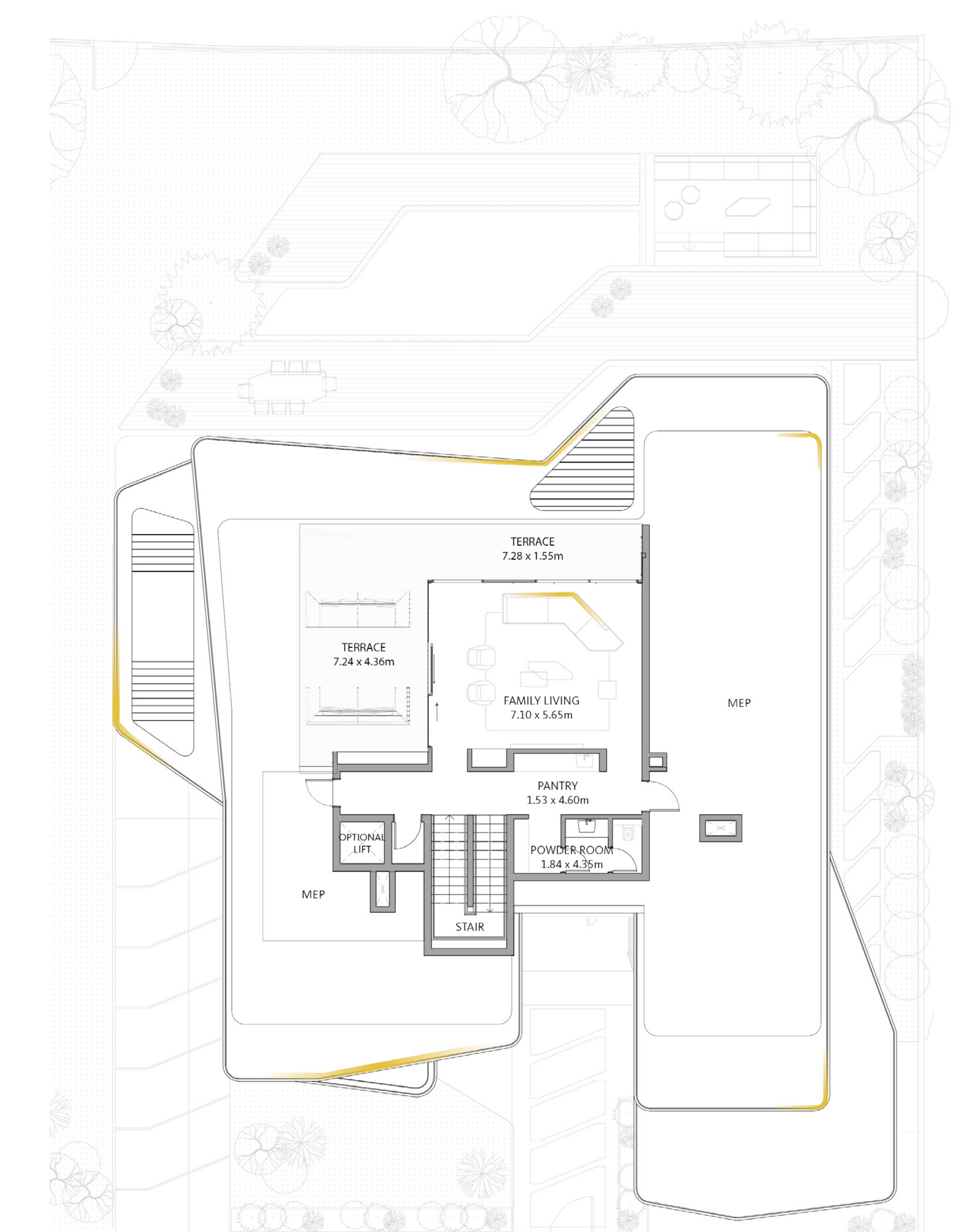
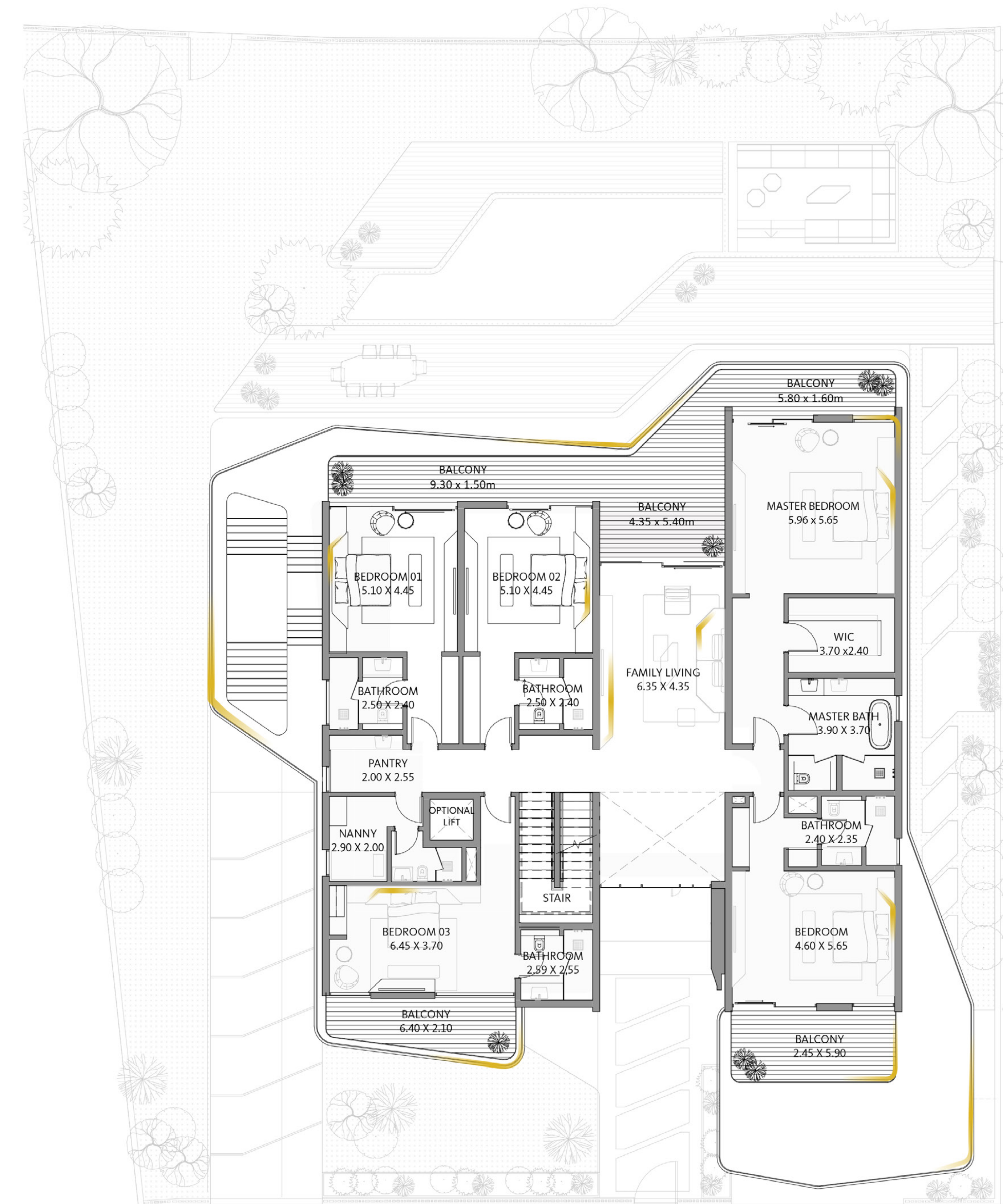
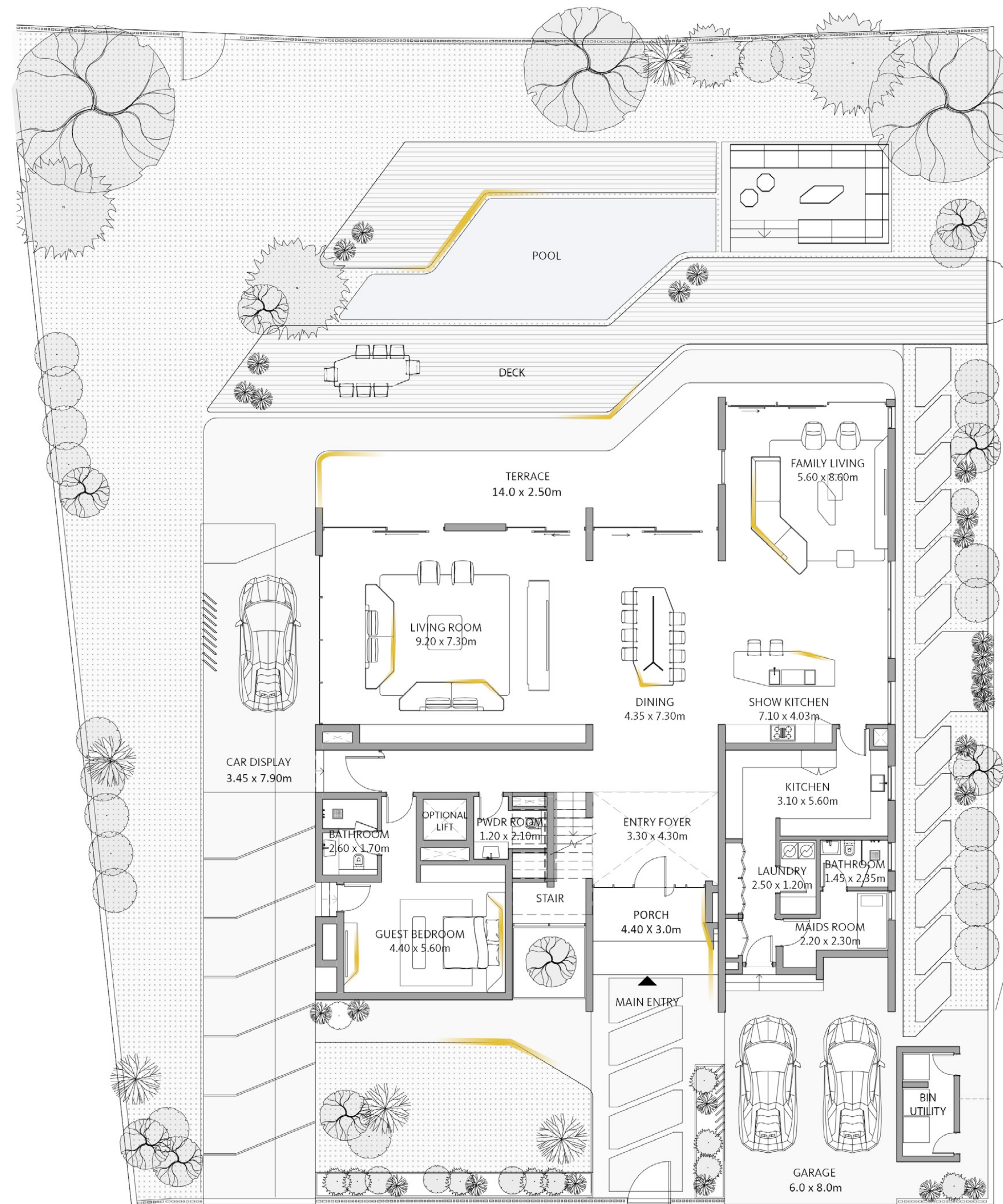
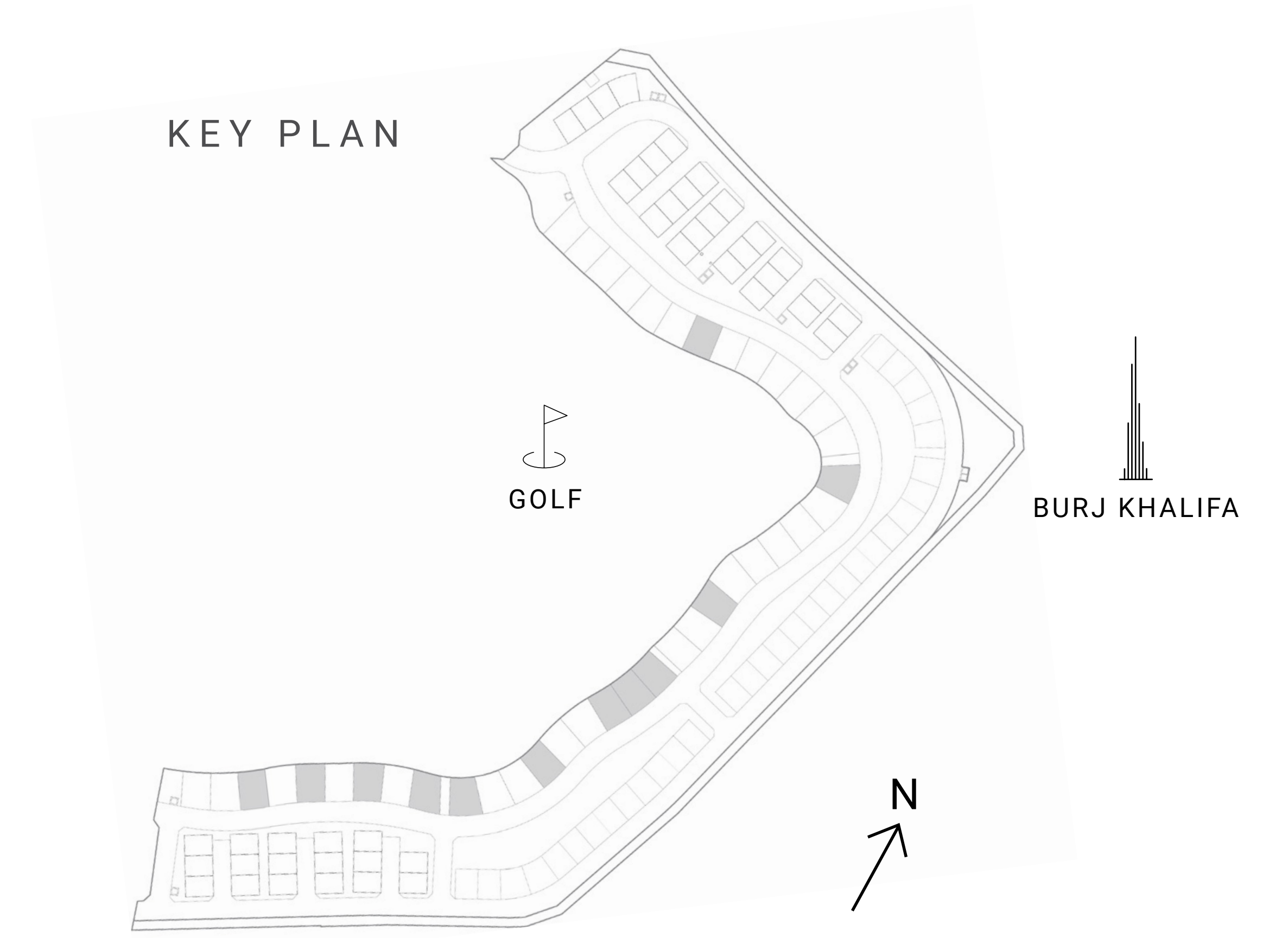
**EMAAR**

# DUBAI HILLS VISTA

INSPIRED BY  
*automobili*  
**Lamborghini**

V10 COLLECTION

<b>SUITE AREA</b>	8063.68 SQ.FT.	749.14 SQ.M.
<b>GARAGE</b>	902.77 SQ.FT.	83.87 SQ.M.
<b>TERRACE AREA</b>	131.64 SQ.FT.	12.23 SQ.M.
<b>BALCONY</b>	1267.56 SQ.FT.	117.76 SQ.M.
<b>TOTAL AREA</b>	10365.65 SQ.FT.	963 SQ.M.
<b>TOTAL BUA</b>	12626.07 SQ.FT.	1173 SQ.M.



**FLOOR PLAN 1.** All dimensions are in imperial and metric, and measured from finish to finish excluding construction tolerances. 2. All materials, dimensions, and drawings are approximate only. 3. Information is subject to change without notice, at developer's absolute discretion. 4. Actual area may vary from the stated area. 5. Drawings not to scale. 6. All images used are for illustrative purposes only and do not represent the actual size, features, specifications, fittings, and furnishings. 7. The developer reserves the right to make revisions / alterations, at its absolute discretion, without any liability whatsoever. 8. The involvement of Automobili Lamborghini S.p.A. in this project is limited to the concepts for the interior design of the Residential Building and to the supply of certain Automobili Lamborghini products provided by EMAAR to the purchasers of the Private Residences. The respective owners of the Private Residence are not authorised to use the Automobili Lamborghini trademarks under any circumstances.

**EMAAR**

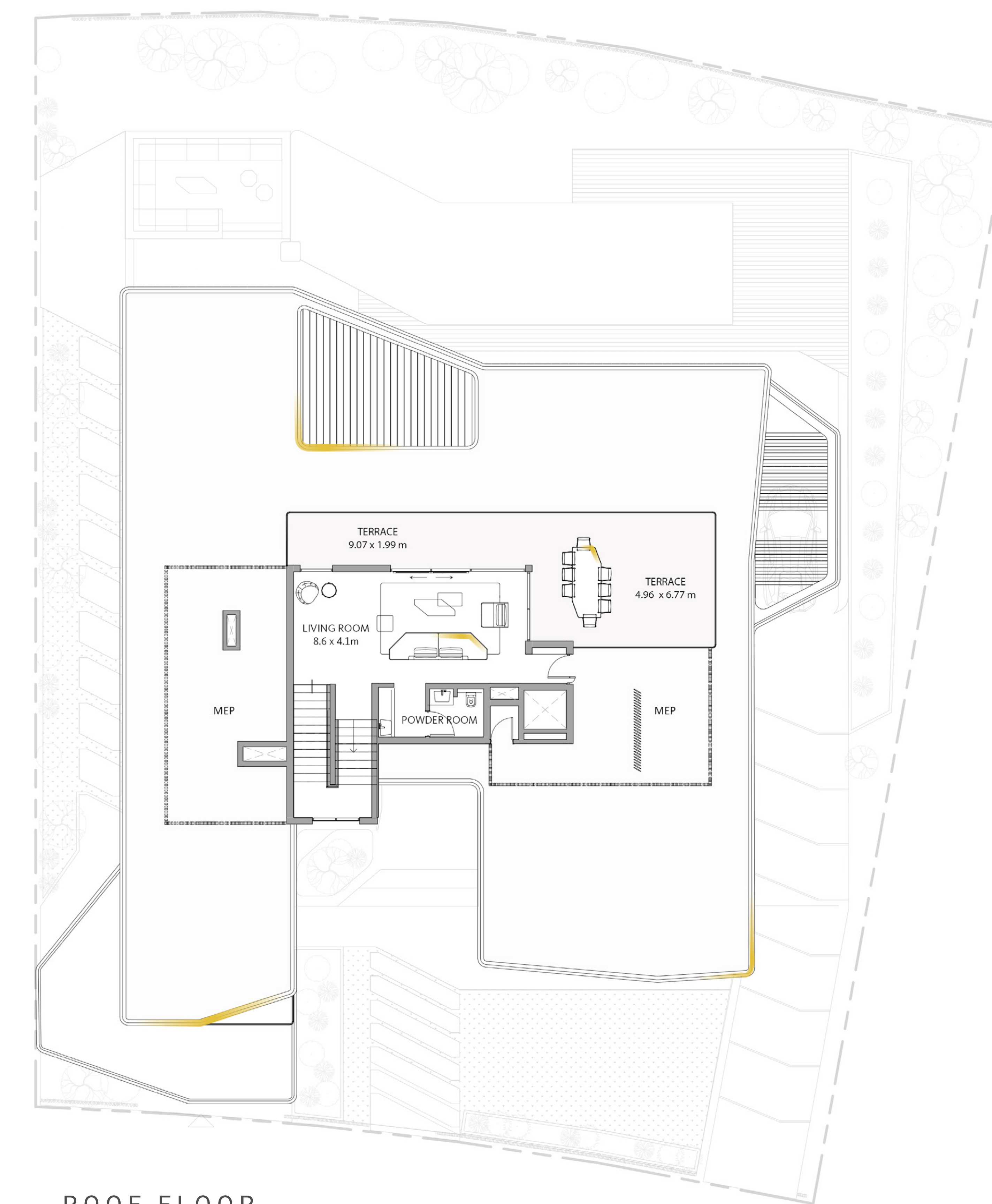
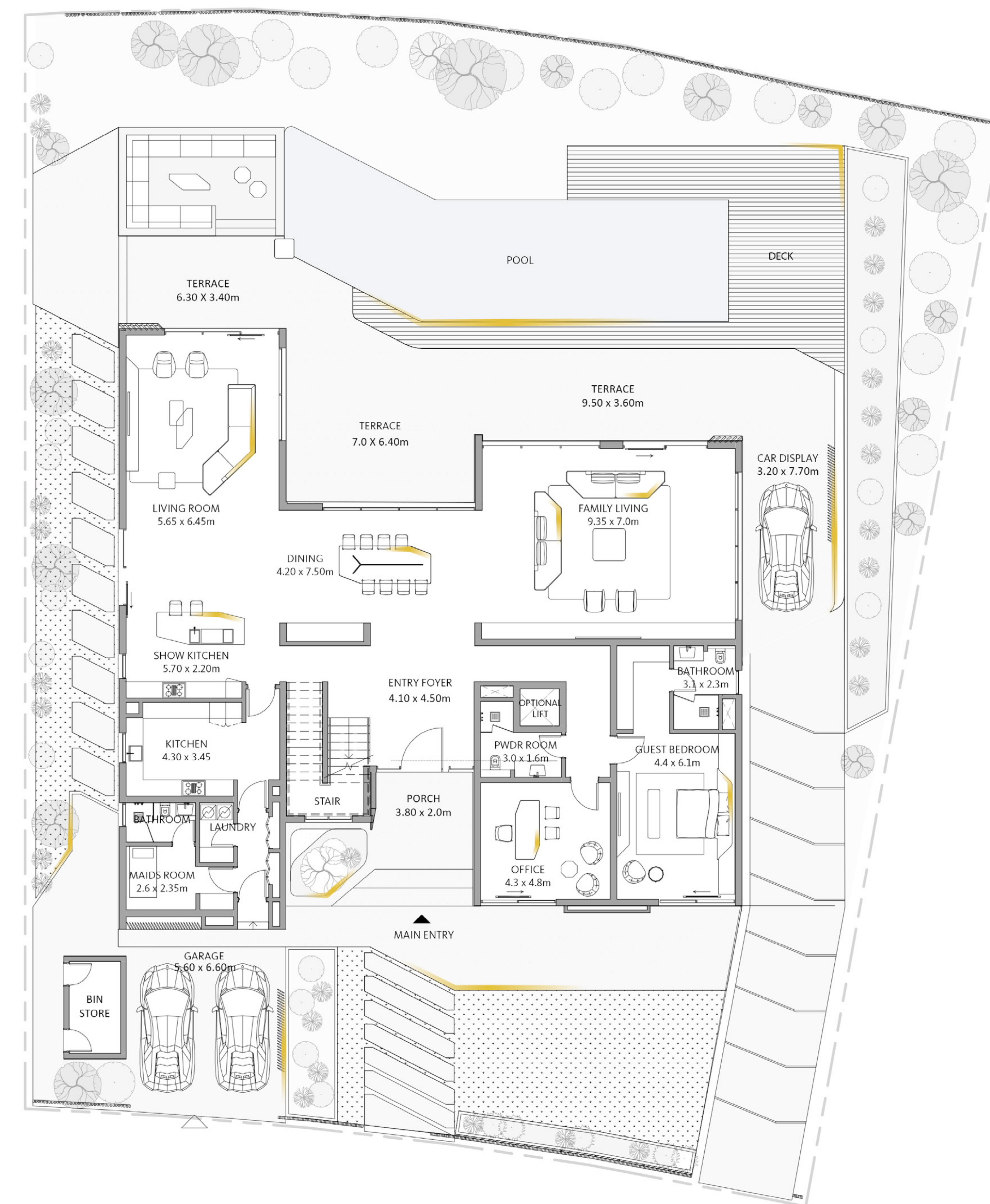
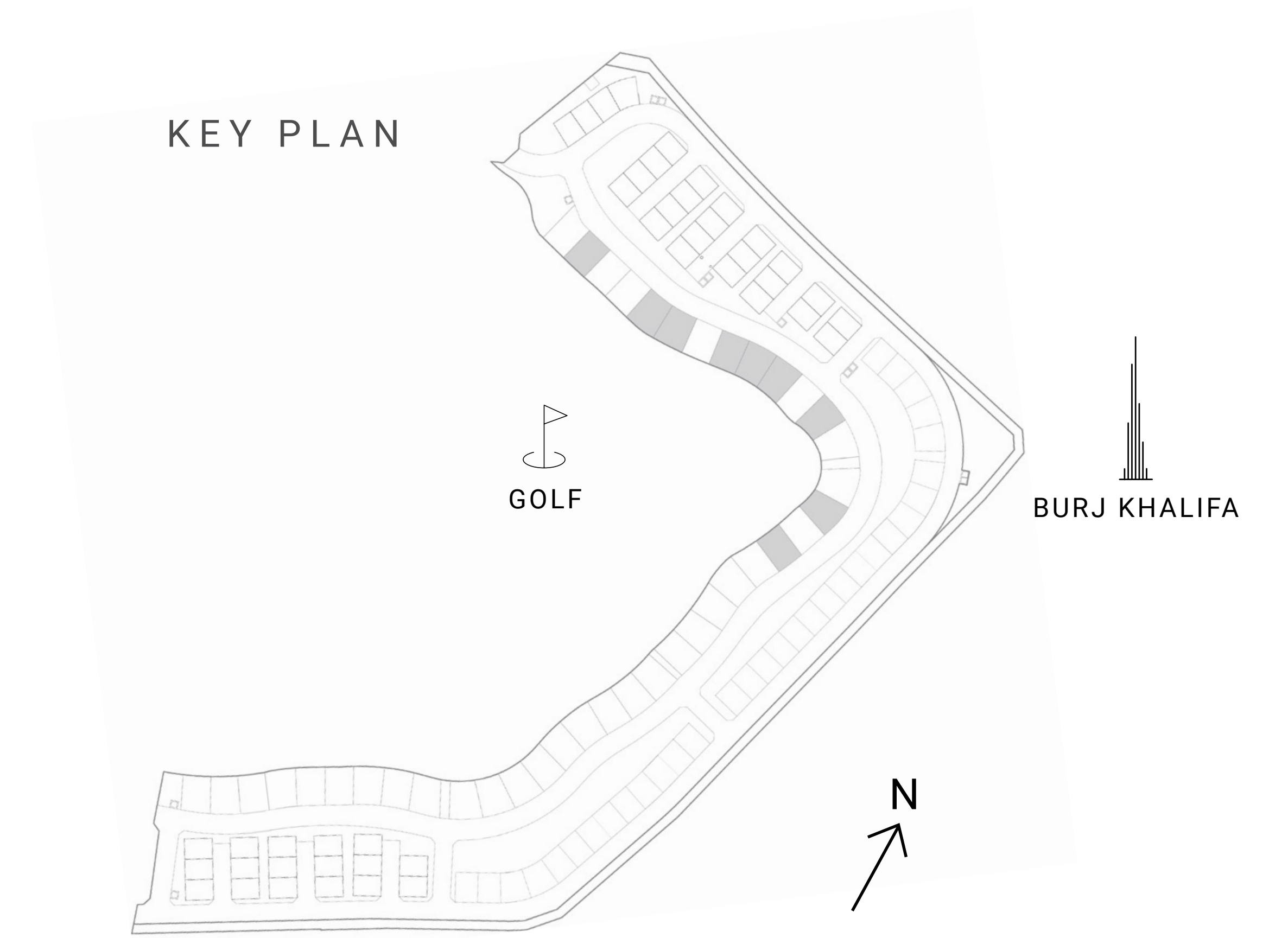
# DUBAI HILLS VISTA

INSPIRED BY

*automobili*  
**Lamborghini**

V12 COLLECTION

<b>SUITE AREA</b>	9005.84 SQ.FT.	836.67 SQ.M.
<b>GARAGE</b>	636.25 SQ.FT.	59.11 SQ.M.
<b>TERRACE AREA</b>	316.57 SQ.FT.	29.41 SQ.M.
<b>BALCONY</b>	1307.06 SQ.FT.	121.43 SQ.M.
<b>TOTAL AREA</b>	11265.72 SQ.FT.	1046.62 SQ.M.
<b>TOTAL BUA</b>	13425.83 SQ.FT.	1247.3 SQ.M.



**FLOOR PLAN 1.** All dimensions are in imperial and metric, and measured from finish to finish excluding construction tolerances. 2. All materials, dimensions, and drawings are approximate only. 3. Information is subject to change without notice, at developer's absolute discretion. 4. Actual area may vary from the stated area. 5. Drawings not to scale. 6. All images used are for illustrative purposes only and do not represent the actual size, features, specifications, fittings, and furnishings. 7. The developer reserves the right to make revisions / alterations, at its absolute discretion, without any liability whatsoever. 8. The involvement of Automobili Lamborghini S.p.A. in this project is limited to the concepts for the interior design of the Residential Building and to the supply of certain Automobili Lamborghini products provided by EMAAR to the purchasers of the Private Residences. The respective owners of the Private Residence are not authorised to use the Automobili Lamborghini trademarks under any circumstances.

**EMAAR**

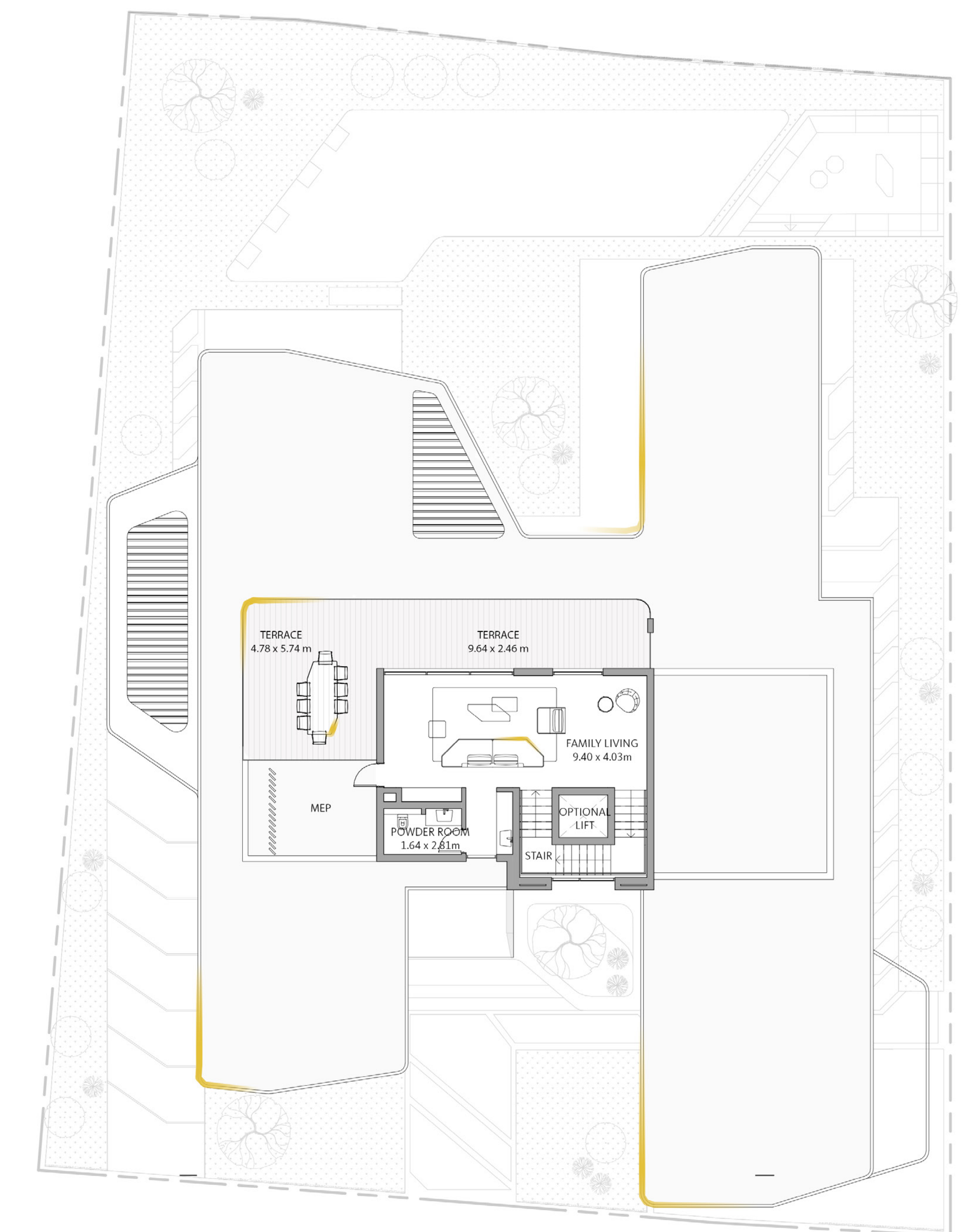
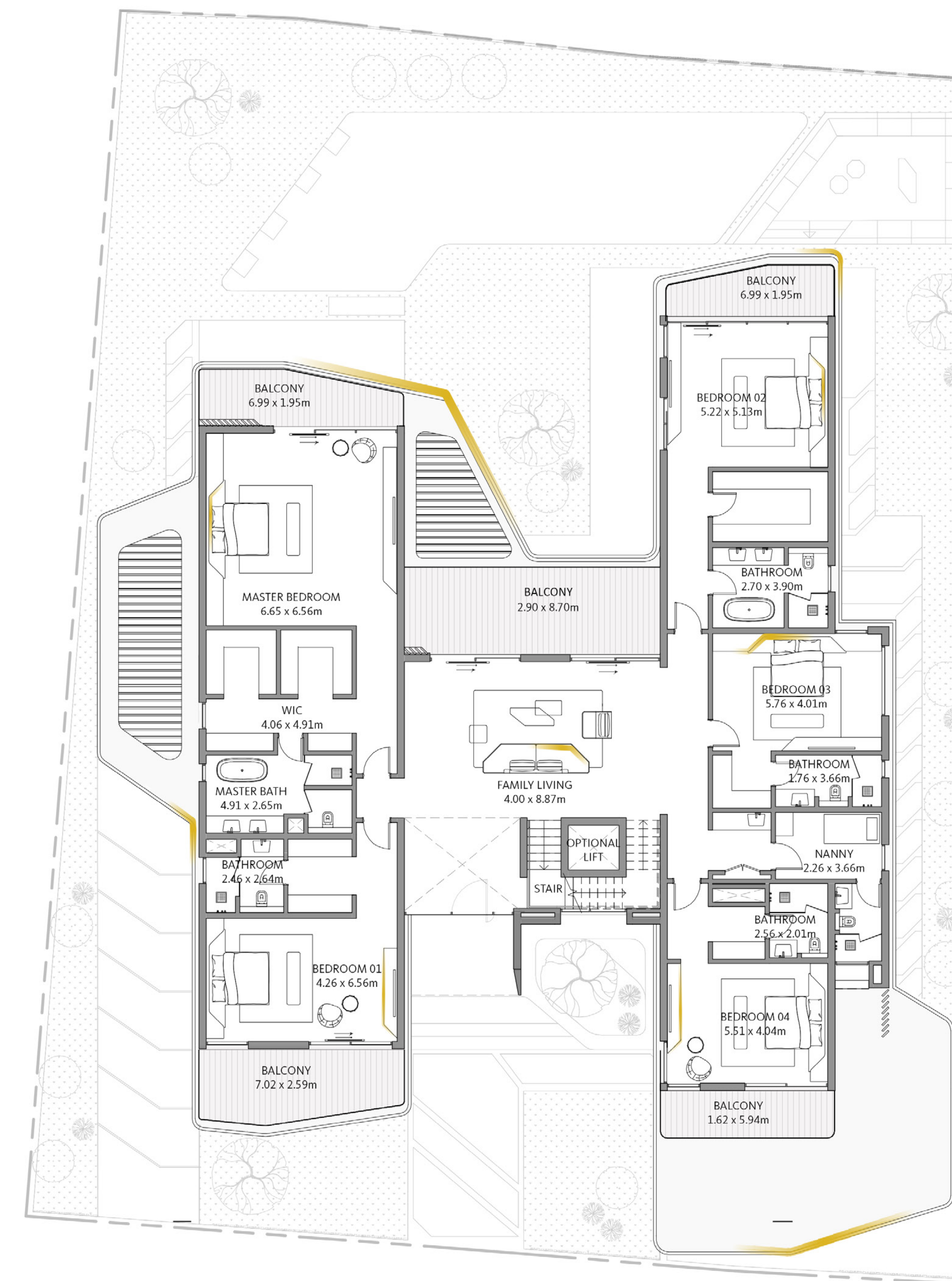
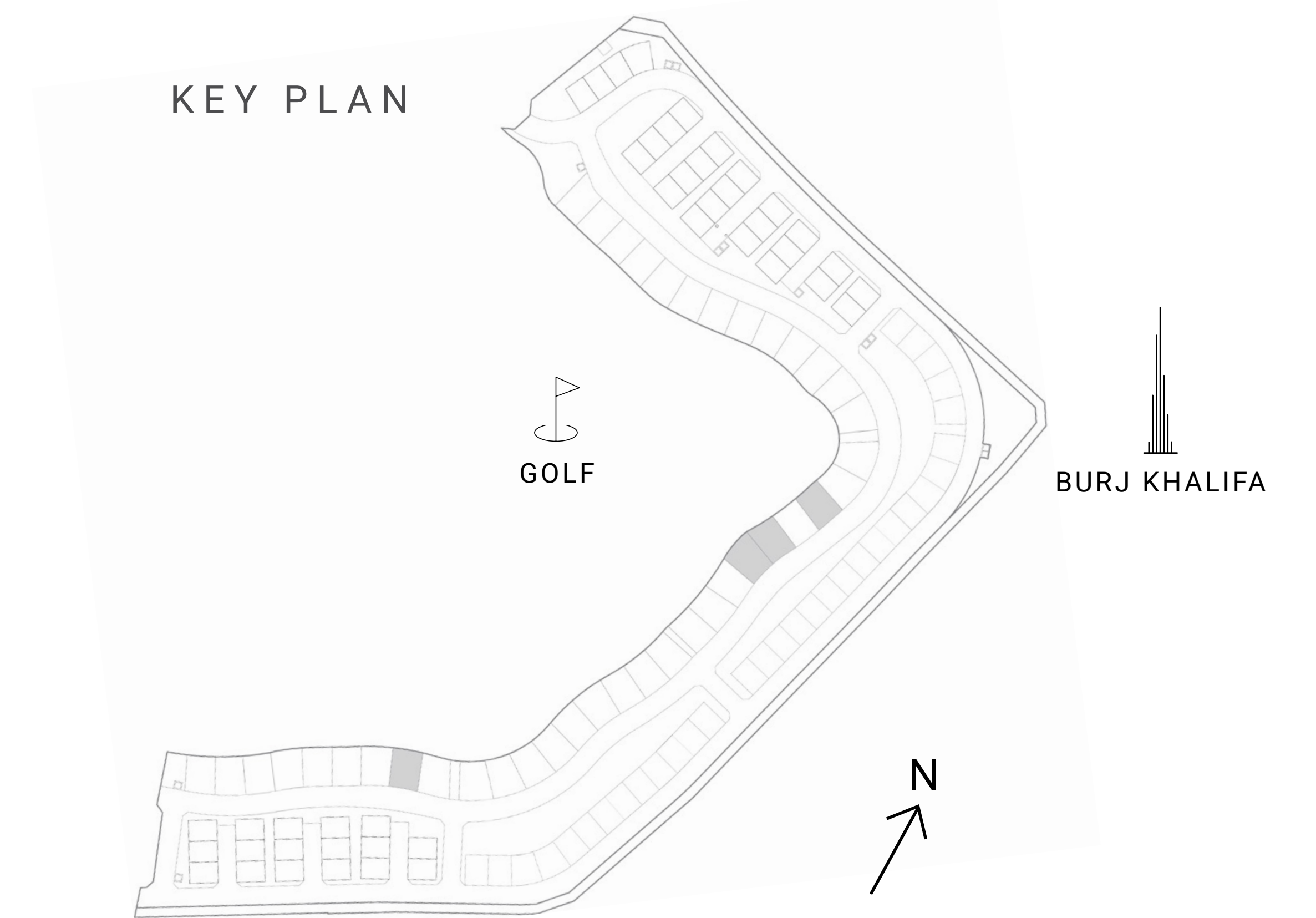
# DUBAI HILLS VISTA

INSPIRED BY

*automobili*  
**Lamborghini**

V12i COLLECTION

SUITE AREA	9185.92 SQ.FT.	853.40 SQ.M.
GARAGE	878.87 SQ.FT	81.65 SQ.M
TERRACE AREA	451.76 SQ.FT.	41.97 SQ.M.
BALCONY	1398.23 SQ.FT.	129.90 SQ.M.
TOTAL AREA	11914.79 SQ.FT.	1106.92 SQ.M.
TOTAL BUA	14436.77 SQ.FT.	1341.22 SQ.M.



**FLOOR PLAN 1.** All dimensions are in imperial and metric, and measured from finish to finish excluding construction tolerances. 2. All materials, dimensions, and drawings are approximate only. 3. Information is subject to change without notice, at developer's absolute discretion. 4. Actual area may vary from the stated area. 5. Drawings not to scale. 6. All images used are for illustrative purposes only and do not represent the actual size, features, specifications, fittings, and furnishings. 7. The developer reserves the right to make revisions / alterations, at its absolute discretion, without any liability whatsoever. 8. The involvement of Automobili Lamborghini S.p.A. in this project is limited to the concepts for the interior design of the Residential Building and to the supply of certain Automobili Lamborghini products provided by EMAAR to the purchasers of the Private Residences. The respective owners of the Private Residence are not authorised to use the Automobili Lamborghini trademarks under any circumstances.

**EMAAR**